

North Continuum

1 THIAM SIEW AVENUE (S436838)

	1	2	3	4	5	6	7	8	9
18	SKY TERRACE								
17	B2	C4-PH	D3-PH	A	B4	B4	C7-PH	C3-PH	B2
16	B2	C4	D3	A	B4	B4	C7	C3	B2
15	B2	C4	D3	A	B4	B4	C7	C3	B2
14	B2	C4	D3	A	B4	B4	C7	C3	B2
13	B2	C4	D3	A	B4	B4	C7	C3	B2
12	B2	C4	D3	A	B4	B4	C7	C3	B2
11	B2	C4	D3	A	B4	B4	C7	C3	B2
10	B2	C4	D3	A	B4	B4	C7	C3	B2
9	B2	C4	D3	A	B4	B4	C7	C3	B2
8	B2	C4	D3	A	B4	B4	C7	C3	B2
7	B2	C4	D3	A	B4	B4	C7	C3	B2
6	B2	C4	D3	A	B4	B4	C7	C3	B2
5	B2	C4	D3	A	B4	B4	C7	C3	B2
4	B2	C4	D3	A	B4	B4	C7	C3	B2
3	B2	C4	D3	A	B4	B4	C7	C3	B2
2	B2	C4	D3	A	B4	B4	C7	C3	B2
1	B2-G	C4-G	D3-G	A-G	B4-G	B3-G	C7-G		

SIGNATURE COLLECTION

1 BEDROOM + STUDY

A A, A-G

2 BEDROOM

B1 B1, B1-G, B1-PH

B2 B2, B2-G

2 BEDROOM + STUDY

B3-G B3-G

B4 B4, B4-G

3 BEDROOM

C1 C1, C1-G, C1-PH

C2 C2, C2-G, C2-PH

C3 C3, C3-PH

3 BEDROOM PREMIER

C4 C4, C4-G, C4-PH

C5 C5, C5-G, C5-PH

C6 C6, C6-G, C6-PH

C7 C7, C7-G, C7-PH

4 BEDROOM

D1 D1, D1-G, D1-PH

D2 D2, D2-G, D2-PH

D3 D3, D3-G, D3-PH

PRESTIGE COLLECTION

3 BEDROOM + STUDY

C8 C8, C8-G, C8-PH

C9 C9, C9-G, C9-PH

4 BEDROOM PREMIER

D4 D4, D4-PH

5 BEDROOM

E E, E-PH

3 THIAM SIEW AVENUE (S436841)

	10	11	12	13	14	15	16	17	18
18	SKY TERRACE								
17	B2	C4-PH	D2-PH	A	B4	B4	C5-PH	C2-PH	B2
16	B2	C4	D2	A	B4	B4	C5	C2	B2
15	B2	C4	D2	A	B4	B4	C5	C2	B2
14	B2	C4	D2	A	B4	B4	C5	C2	B2
13	B2	C4	D2	A	B4	B4	C5	C2	B2
12	B2	C4	D2	A	B4	B4	C5	C2	B2
11	B2	C4	D2	A	B4	B4	C5	C2	B2
10	B2	C4	D2	A	B4	B4	C5	C2	B2
9	B2	C4	D2	A	B4	B4	C5	C2	B2
8	B2	C4	D2	A	B4	B4	C5	C2	B2
7	B2	C4	D2	A	B4	B4	C5	C2	B2
6	B2	C4	D2	A	B4	B4	C5	C2	B2
5	B2	C4	D2	A	B4	B4	C5	C2	B2
4	B2	C4	D2	A	B4	B4	C5	C2	B2
3	B2	C4	D2	A	B4	B4	C5	C2	B2
2	B2	C4	D2	A	B4	B4	C5	C2	B2
1	B2-G	C4-G	D2-G	A-G	B4-G	B3-G	C5-G	C2-G	B2-G

5 THIAM SIEW AVENUE (S436843)

	19	20	21	22	23	24
18	E-PH	C9-PH	B1-PH	C8-PH	D4-PH	C1-PH
17	E	C9	B1	C8	D4	C1
16	E	C9	B1	C8	D4	C1
15	E	C9	B1	C8	D4	C1
14	E	C9	B1	C8	D4	C1
13	E	C9	B1	C8	D4	C1
12	E	C9	B1	C8	D4	C1
11	E	C9	B1	C8	D4	C1
10	E	C9	B1	C8	D4	C1
9	E	C9	B1	C8	D4	C1
8	E	C9	B1	C8	D4	C1
7	E	C9	B1	C8	D4	C1
6	E	C9	B1	C8	D4	C1
5	E	C9	B1	C8	D4	C1
4	E	C9	B1	C8	D4	C1
3	E	C9	B1	C8	D4	C1
2		C9	B1	C8		C1
1		C9-G	B1-G	C8-G		C1-G

South Continuum

2 THIAM SIEW AVENUE (S436839)

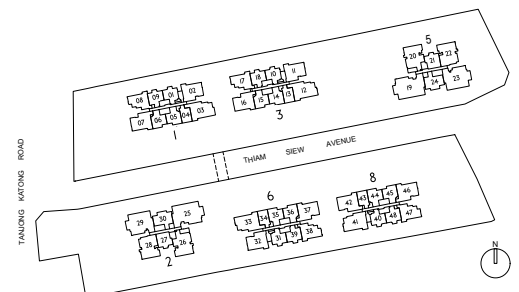
	25	26	27	28	29	30
18	E-PH	C9-PH	BI-PH	C8-PH	D4-PH	CI-PH
17	E	C9	BI	C8	D4	CI
16	E	C9	BI	C8	D4	CI
15	E	C9	BI	C8	D4	CI
14	E	C9	BI	C8	D4	CI
13	E	C9	BI	C8	D4	CI
12	E	C9	BI	C8	D4	CI
11	E	C9	BI	C8	D4	CI
10	E	C9	BI	C8	D4	CI
9	E	C9	BI	C8	D4	CI
8	E	C9	BI	C8	D4	CI
7	E	C9	BI	C8	D4	CI
6	E	C9	BI	C8	D4	CI
5	E	C9	BI	C8	D4	CI
4	E	C9	BI	C8	D4	CI
3	E	C9	BI	C8	D4	CI
2		C9	BI	C8		CI
1		C9-G	BI-G	C8-G		CI-G

6 THIAM SIEW AVENUE (S436844)

	31	32	33	34	35	36	37	38	39
18	SKY TERRACE								
17	B2	C4-PH	D2-PH	A	B4	B4	C5-PH	C2-PH	B2
16	B2	C4	D2	A	B4	B4	C5	C2	B2
15	B2	C4	D2	A	B4	B4	C5	C2	B2
14	B2	C4	D2	A	B4	B4	C5	C2	B2
13	B2	C4	D2	A	B4	B4	C5	C2	B2
12	B2	C4	D2	A	B4	B4	C5	C2	B2
11	B2	C4	D2	A	B4	B4	C5	C2	B2
10	B2	C4	D2	A	B4	B4	C5	C2	B2
9	B2	C4	D2	A	B4	B4	C5	C2	B2
8	B2	C4	D2	A	B4	B4	C5	C2	B2
7	B2	C4	D2	A	B4	B4	C5	C2	B2
6	B2	C4	D2	A	B4	B4	C5	C2	B2
5	B2	C4	D2	A	B4	B4	C5	C2	B2
4	B2	C4	D2	A	B4	B4	C5	C2	B2
3	B2	C4	D2	A	B4	B4	C5	C2	B2
2	B2	C4	D2	A	B4	B4	C5	C2	B2
1	B2-G	C4-G	D2-G	A-G	B4-G	B3-G	C5-G	C2-G	B2-G

8 THIAM SIEW AVENUE (S436846)

	40	41	42	43	44	45	46	47	48
18	SKY TERRACE								
17	B2	DI-PH	C5-PH	A	B4	B4	C6-PH	C2-PH	B2
16	B2	DI	C5	A	B4	B4	C6	C2	B2
15	B2	DI	C5	A	B4	B4	C6	C2	B2
14	B2	DI	C5	A	B4	B4	C6	C2	B2
13	B2	DI	C5	A	B4	B4	C6	C2	B2
12	B2	DI	C5	A	B4	B4	C6	C2	B2
11	B2	DI	C5	A	B4	B4	C6	C2	B2
10	B2	DI	C5	A	B4	B4	C6	C2	B2
9	B2	DI	C5	A	B4	B4	C6	C2	B2
8	B2	DI	C5	A	B4	B4	C6	C2	B2
7	B2	DI	C5	A	B4	B4	C6	C2	B2
6	B2	DI	C5	A	B4	B4	C6	C2	B2
5	B2	DI	C5	A	B4	B4	C6	C2	B2
4	B2	DI	C5	A	B4	B4	C6	C2	B2
3	B2	DI	C5	A	B4	B4	C6	C2	B2
2	B2	DI	C5	A	B4	B4	C6	C2	B2
1	B2-G	DI-G	C5-G	A-G	B4-G	B3-G	C6-G		



Type A

1 BEDROOM + STUDY

Type A-G

52 m² / 560 ft²

Inclusive of 5 m² PES & 3 m² AC Ledge

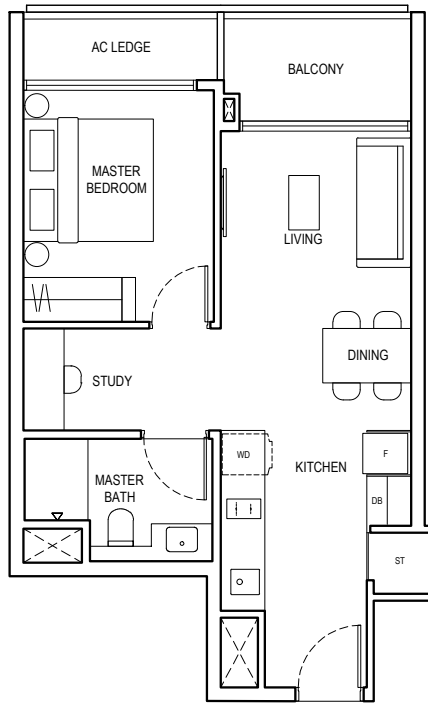
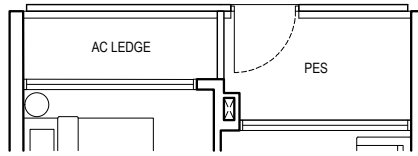
- BLOCK 1** #01-04
- BLOCK 3** #01-13
- BLOCK 6** #01-34
- BLOCK 8** #01-43

Type A

52 m² / 560 ft²

Inclusive of 5 m² Balcony & 3 m² AC Ledge

- BLOCK 1** #02-04 to #17-04
- BLOCK 3** #02-13 to #17-13
- BLOCK 6** #02-34 to #17-34
- BLOCK 8** #02-43 to #17-43

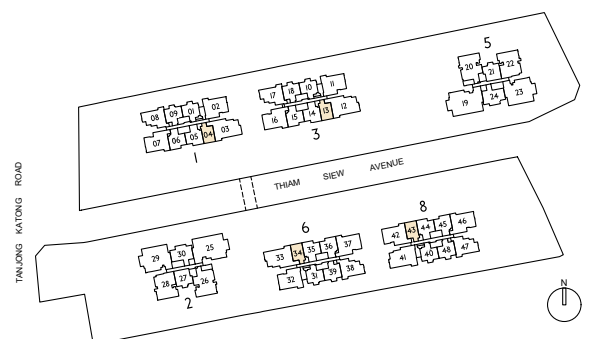


LEGEND

- | | | | |
|-----|------------------------|----|---|
| PES | PRIVATE ENCLOSED SPACE | AC | AIR-CONDITIONER |
| DB | DISTRIBUTION BOARD | ST | STORE |
| F | FRIDGE | RC | REINFORCED CONCRETE (EXCLUDED FROM STRATA AREA) |
| WD | WASHER DRYER COMBO | | VOID SPACE (EXCLUDED FROM STRATA AREA) |



ALL PLANS ARE SUBJECT TO CHANGES BY THE RELEVANT AUTHORITIES.
 MEASUREMENTS ARE APPROXIMATE ONLY AND SUBJECT TO FINAL SURVEY.
 INFORMATION ACCURATE AT POINT OF PRINTING.
 BP APPROVAL NO.: A1716-00010-2021-BP01 DATED 24/03/2023



Type B1

2 BEDROOM

Type B1-G

60 m² / 646 ft²

Inclusive of 5 m² PES & 4 m² AC Ledge

BLOCK 2 #01-27
BLOCK 5 #01-21

Type B1

60 m² / 646 ft²

Inclusive of 5 m² Balcony & 3 m² AC Ledge

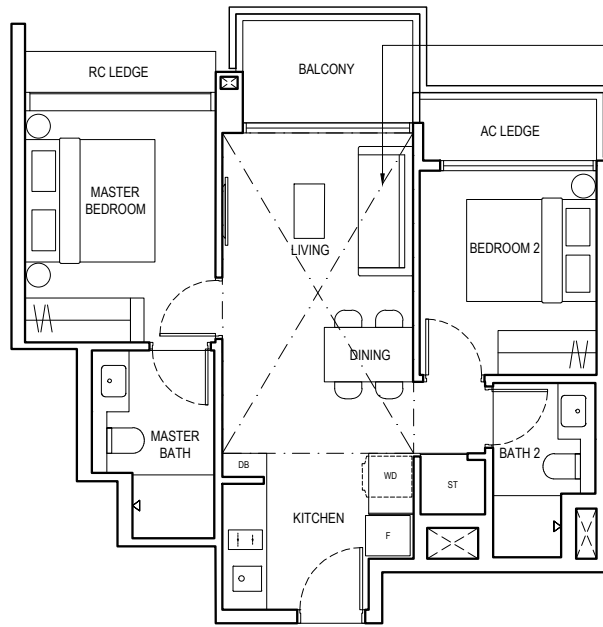
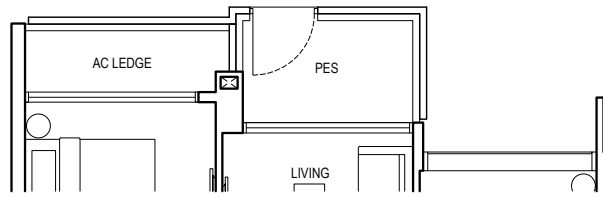
BLOCK 2 #02-27 to #17-27
BLOCK 5 #02-21 to #17-21

Type B1-PH

75 m² / 807 ft²

Inclusive of 15 m² Strata Void, 5 m² Balcony & 3 m² AC Ledge

BLOCK 2 #18-27
BLOCK 5 #18-21



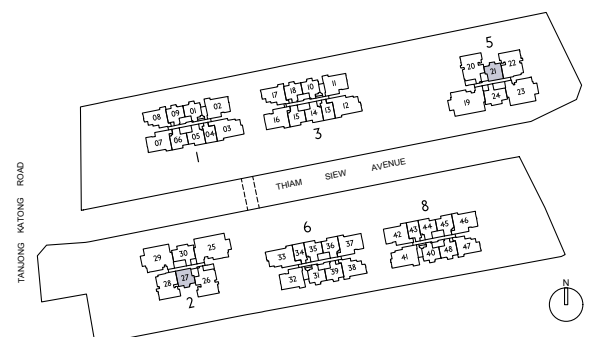
DOTTED LINE DENOTES STRATA VOID COMPLETE WITH BULKHEAD AT TYPE B1-PH

LEGEND

PES	PRIVATE ENCLOSED SPACE	AC	AIR-CONDITIONER
DB	DISTRIBUTION BOARD	ST	STORE I
F	FRIDGE	RC	REINFORCED CONCRETE (EXCLUDED FROM STRATA AREA)
WD	WASHER DRYER COMBO	☐	VOID SPACE (EXCLUDED FROM STRATA AREA)



ALL PLANS ARE SUBJECT TO CHANGES BY THE RELEVANT AUTHORITIES. MEASUREMENTS ARE APPROXIMATE ONLY AND SUBJECT TO FINAL SURVEY. INFORMATION ACCURATE AT POINT OF PRINTING. BP APPROVAL NO.: A1716-00010-2021-BP01 DATED 24/03/2023



Type B2

2 BEDROOM

Type B2-G

62 m² / 667 ft²

Inclusive of 5 m² PES & 3 m² AC ledge

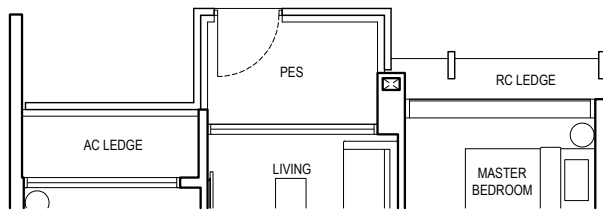
- BLOCK 1** #01-01*
- BLOCK 3** #01-10*
- BLOCK 3** #01-18
- BLOCK 6** #01-31*
- BLOCK 6** #01-39
- BLOCK 8** #01-40*

Type B2

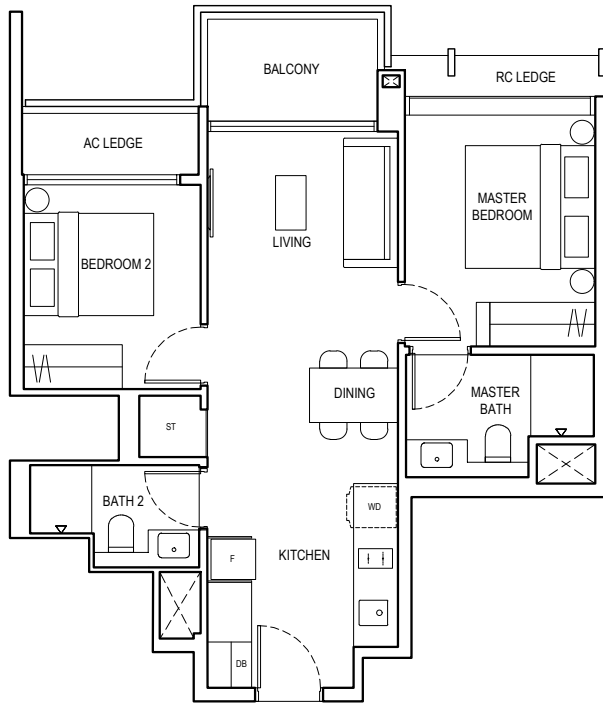
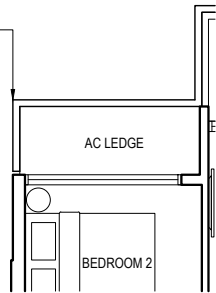
62 m² / 667 ft²

Inclusive of 5 m² Balcony & 3 m² AC ledge

- BLOCK 1** #02-01* to #17-01*
- BLOCK 1** #02-09 to #17-09
- BLOCK 3** #02-10* to #17-10*
- BLOCK 3** #02-18 to #17-18
- BLOCK 6** #02-31* to #17-31*
- BLOCK 6** #02-39 to #17-39
- BLOCK 8** #02-40* to #17-40*
- BLOCK 8** #02-48 to #17-48



FOR UNITS:
#01-01 TO 17-01*
#01-10 TO 17-10*
#01-31 TO 17-31*
#01-40 TO 17-40*

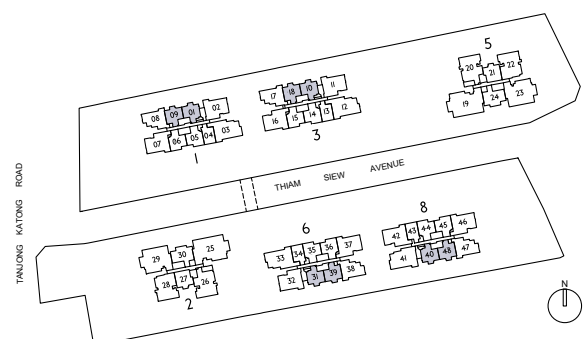


LEGEND

- | | | | |
|-----|------------------------|----|---|
| PES | PRIVATE ENCLOSED SPACE | ST | STORE |
| DB | DISTRIBUTION BOARD | RC | REINFORCED CONCRETE (EXCLUDED FROM STRATA AREA) |
| F | FRIDGE | | VOID SPACE (EXCLUDED FROM STRATA AREA) |
| WD | WASHER DRYER COMBO | * | MIRRORED UNIT |
| AC | AIR-CONDITIONER | | |



ALL PLANS ARE SUBJECT TO CHANGES BY THE RELEVANT AUTHORITIES.
MEASUREMENTS ARE APPROXIMATE ONLY AND SUBJECT TO FINAL SURVEY.
INFORMATION ACCURATE AT POINT OF PRINTING.
BP APPROVAL NO.: A1716-00010-2021-BP01 DATED 24/03/2023



Type B3

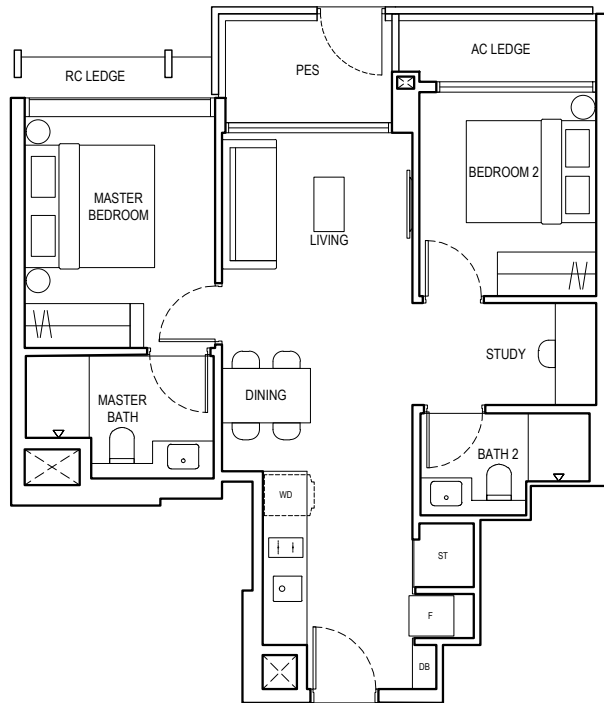
2 BEDROOM + STUDY

Type B3-G

65 m² / 700 ft²

Inclusive of 5 m² PES &
3 m² AC Ledge

- BLOCK 1** #01-06
- BLOCK 3** #01-15
- BLOCK 6** #01-36
- BLOCK 8** #01-45

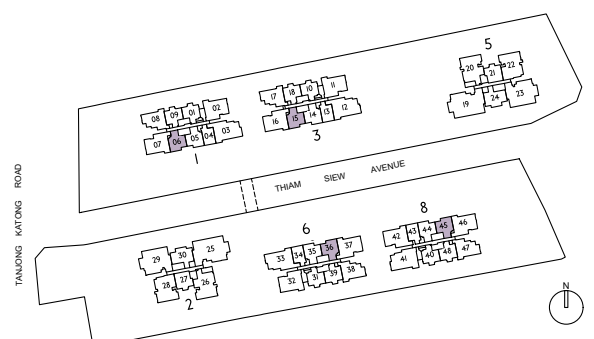


LEGEND

PES	PRIVATE ENCLOSED SPACE	AC	AIR-CONDITIONER
DB	DISTRIBUTION BOARD	ST	STORE I
F	FRIDGE	RC	REINFORCED CONCRETE (EXCLUDED FROM STRATA AREA)
WD	WASHER DRYER COMBO		VOID SPACE (EXCLUDED FROM STRATA AREA)



ALL PLANS ARE SUBJECT TO CHANGES BY THE RELEVANT AUTHORITIES.
MEASUREMENTS ARE APPROXIMATE ONLY AND SUBJECT TO FINAL SURVEY.
INFORMATION ACCURATE AT POINT OF PRINTING.
BP APPROVAL NO.: A1716-00010-2021-BP01 DATED 24/03/2023



Type B4

2 BEDROOM + STUDY

Type B4-G

67 m² / 721 ft²

Inclusive of 5 m² PES & 3 m² AC Ledge

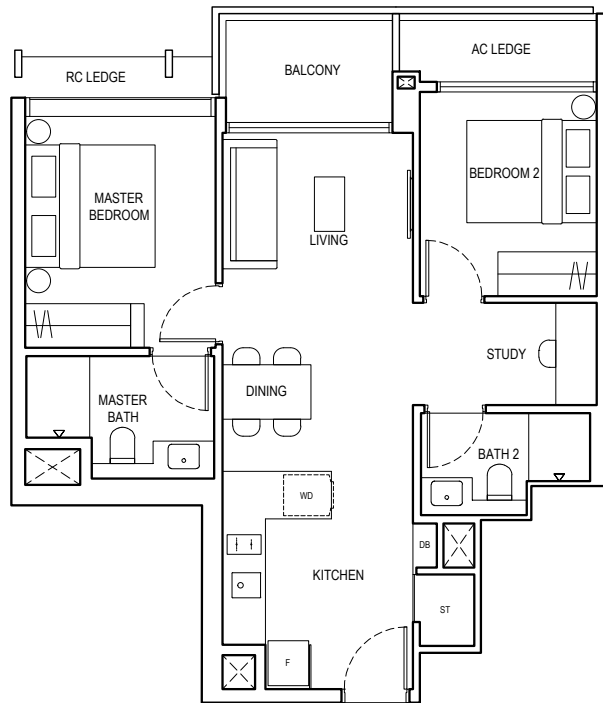
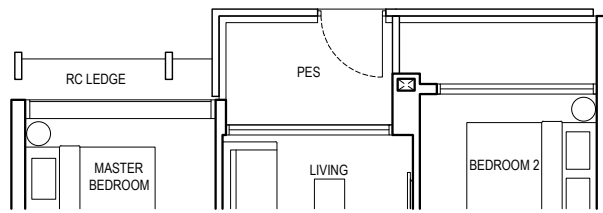
- BLOCK 1** #01-05*
- BLOCK 3** #01-14*
- BLOCK 6** #01-35*
- BLOCK 8** #01-44*

Type B4

67 m² / 721 ft²

Inclusive of 5 m² Balcony & 3 m² AC Ledge

- BLOCK 1** #02-05* to #17-05*
- BLOCK 1** #02-06 to #17-06
- BLOCK 3** #02-14* to #17-14*
- BLOCK 3** #02-15 to #17-15
- BLOCK 6** #02-35* to #17-35*
- BLOCK 6** #02-36 to #17-36
- BLOCK 8** #02-44* to #17-44*
- BLOCK 8** #02-45 to #17-45



LEGEND

- | | | | |
|-----|------------------------|----|---|
| PES | PRIVATE ENCLOSED SPACE | ST | STORE |
| DB | DISTRIBUTION BOARD | RC | REINFORCED CONCRETE (EXCLUDED FROM STRATA AREA) |
| F | FRIDGE | | VOID SPACE (EXCLUDED FROM STRATA AREA) |
| WD | WASHER DRYER COMBO | * | MIRRORED UNIT |
| AC | AIR-CONDITIONER | | |



ALL PLANS ARE SUBJECT TO CHANGES BY THE RELEVANT AUTHORITIES.
 MEASUREMENTS ARE APPROXIMATE ONLY AND SUBJECT TO FINAL SURVEY.
 INFORMATION ACCURATE AT POINT OF PRINTING.
 BP APPROVAL NO.: A1716-00010-2021-BP01 DATED 24/03/2023



Type C1

3 BEDROOM

Type C1-G

81 m² / 872 ft²

Inclusive of 5 m² PES & 5 m² AC Ledge

BLOCK 2 #01-30
BLOCK 5 #01-24

Type C1

81 m² / 872 ft²

Inclusive of 5 m² Balcony & 5 m² AC Ledge

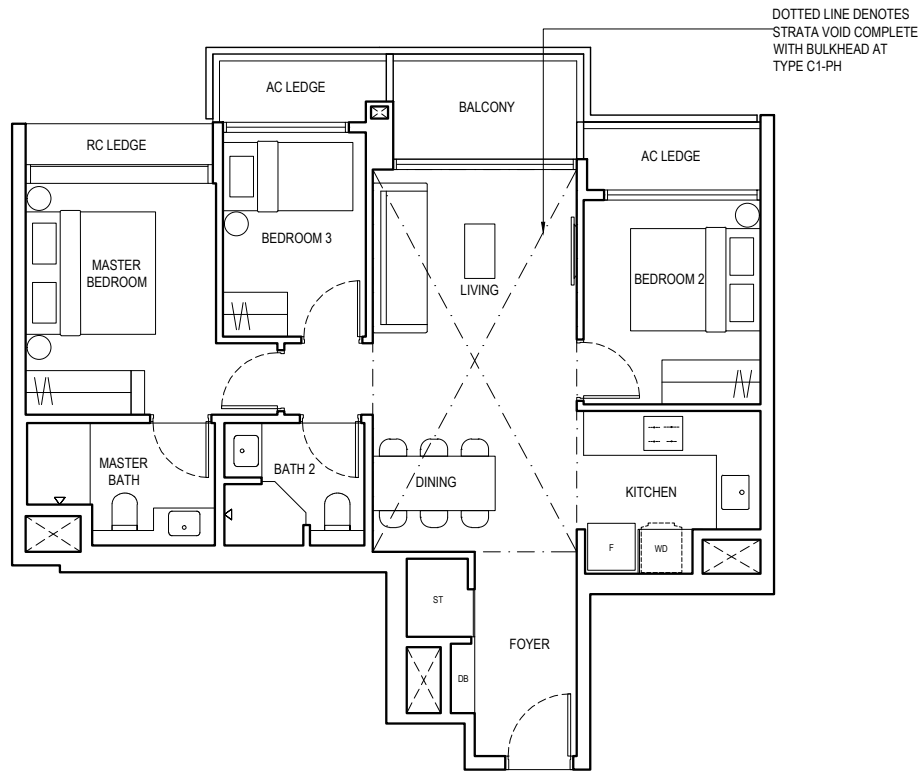
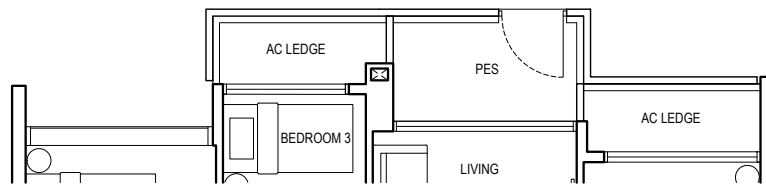
BLOCK 2 #02-30 to #17-30
BLOCK 5 #02-24 to #17-24

Type C1-PH

100 m² / 1076 ft²

Inclusive of 19 m² Strata Void, 5 m² Balcony & 5 m² AC Ledge

BLOCK 2 #18-30
BLOCK 5 #18-24

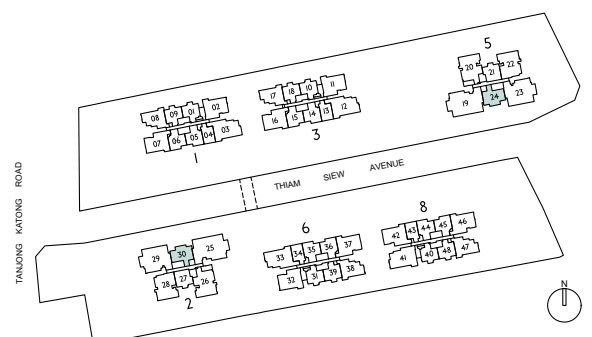


LEGEND

PES	PRIVATE ENCLOSED SPACE	AC	AIR-CONDITIONER
DB	DISTRIBUTION BOARD	ST	STORE
F	FRIDGE	RC	REINFORCED CONCRETE (EXCLUDED FROM STRATA AREA)
WD	WASHER DRYER COMBO	☐	VOID SPACE (EXCLUDED FROM STRATA AREA)



ALL PLANS ARE SUBJECT TO CHANGES BY THE RELEVANT AUTHORITIES.
MEASUREMENTS ARE APPROXIMATE ONLY AND SUBJECT TO FINAL SURVEY.
INFORMATION ACCURATE AT POINT OF PRINTING.
BP APPROVAL NO.: A1716-00010-2021-BP01 DATED 24/03/2023



Type C2

3 BEDROOM

Type C2-G

88 m² / 947 ft²

Inclusive of 5 m² PES & 5 m² AC Ledge

BLOCK 3 #01-17
BLOCK 6 #01-38

Type C2

88 m² / 947 ft²

Inclusive of 5 m² Balcony & 5 m² AC Ledge

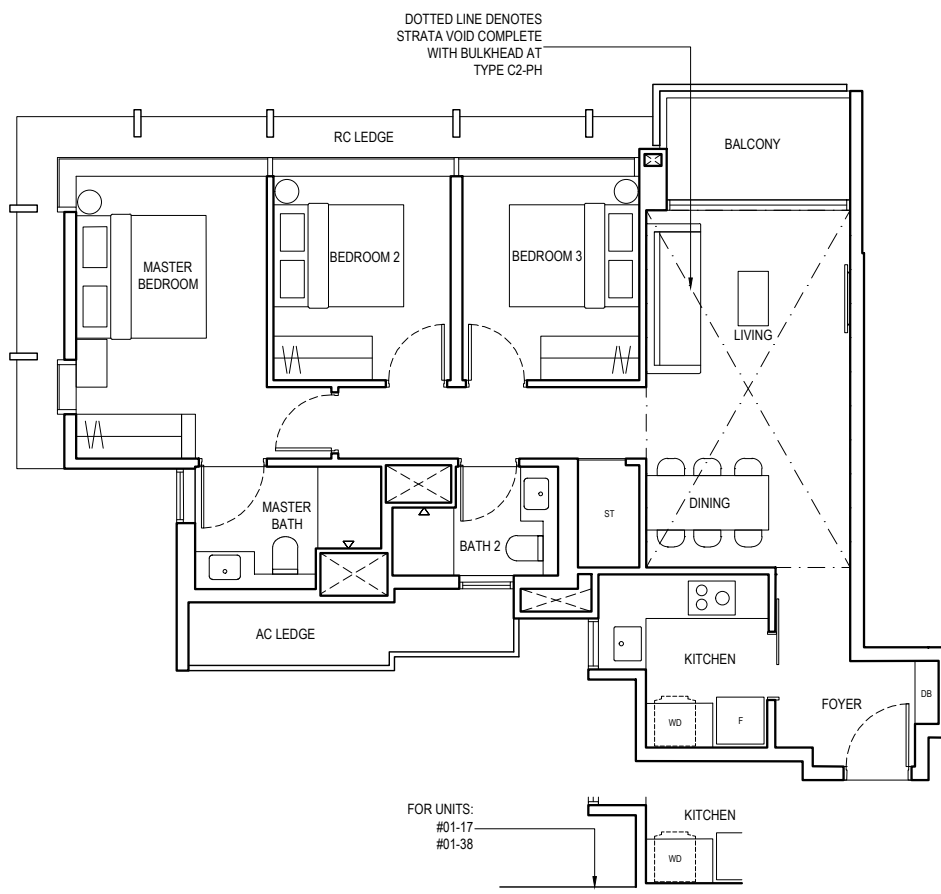
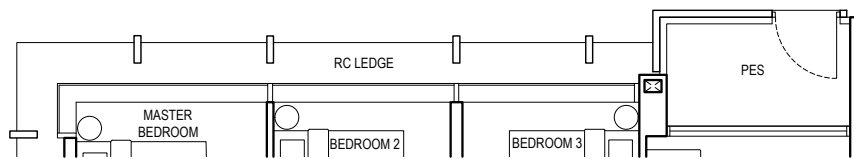
BLOCK 3 #02-17 to #16-17
BLOCK 6 #02-38 to #16-38
BLOCK 8 #02-47 to #16-47

Type C2-PH

105 m² / 1130 ft²

Inclusive of 17 m² Strata Void, 5 m² Balcony & 5 m² AC Ledge

BLOCK 3 #17-17
BLOCK 6 #17-38
BLOCK 8 #17-47



LEGEND

PES	PRIVATE ENCLOSED SPACE	AC	AIR-CONDITIONER
DB	DISTRIBUTION BOARD	ST	STORE
F	FRIDGE	RC	REINFORCED CONCRETE (EXCLUDED FROM STRATA AREA)
WD	WASHER DRYER COMBO	□	VOID SPACE (EXCLUDED FROM STRATA AREA)



ALL PLANS ARE SUBJECT TO CHANGES BY THE RELEVANT AUTHORITIES.
MEASUREMENTS ARE APPROXIMATE ONLY AND SUBJECT TO FINAL SURVEY.
INFORMATION ACCURATE AT POINT OF PRINTING.
BP APPROVAL NO.: A1716-00010-2021-BP01 DATED 24/03/2023



Type C3

3 BEDROOM

Type C3

88 m² / 947 ft²

Inclusive of 5 m² Balcony & 5 m² AC Ledge

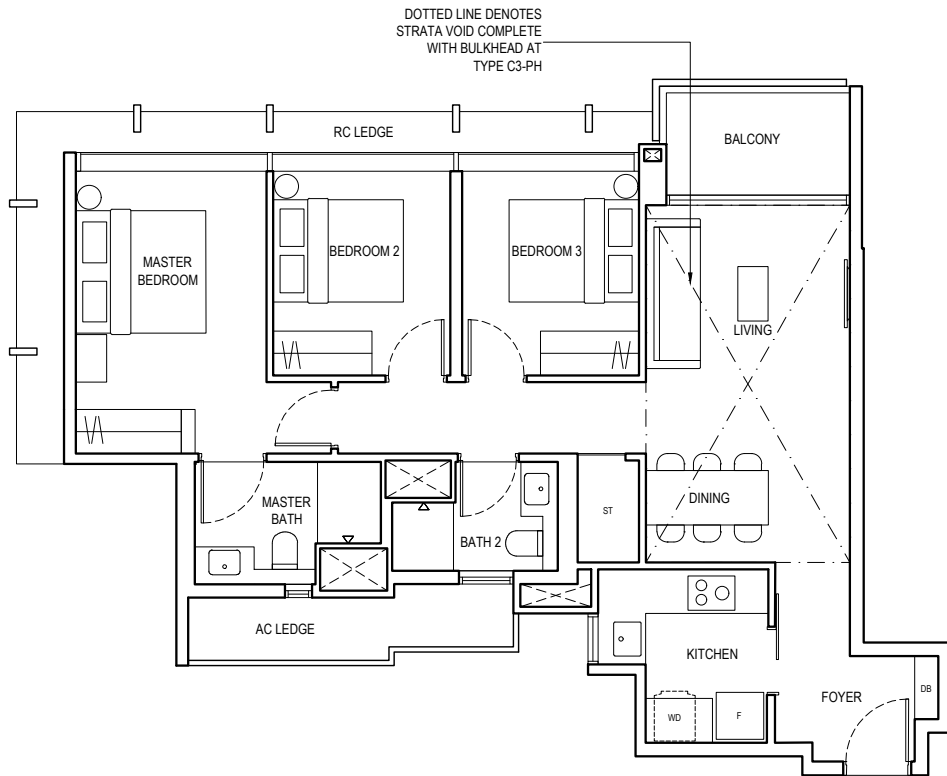
BLOCK I #02-08 to #16-08

Type C3-PH

106 m² / 1141 ft²

Inclusive of 18 m² Strata Void, 5 m² Balcony & 5 m² AC Ledge

BLOCK I #17-08

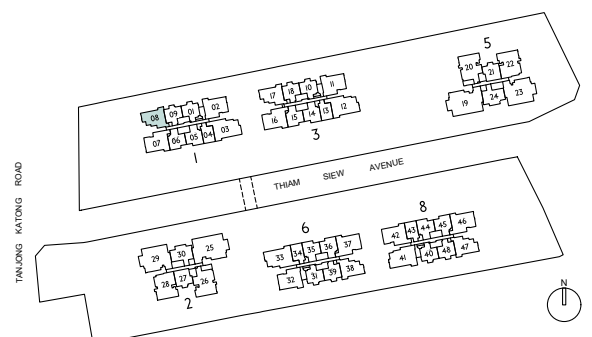


LEGEND

PES	PRIVATE ENCLOSED SPACE	AC	AIR-CONDITIONER
DB	DISTRIBUTION BOARD	ST	STORE
F	FRIDGE	RC	REINFORCED CONCRETE (EXCLUDED FROM STRATA AREA)
WD	WASHER DRYER COMBO		VOID SPACE (EXCLUDED FROM STRATA AREA)



ALL PLANS ARE SUBJECT TO CHANGES BY THE RELEVANT AUTHORITIES.
 MEASUREMENTS ARE APPROXIMATE ONLY AND SUBJECT TO FINAL SURVEY.
 INFORMATION ACCURATE AT POINT OF PRINTING.
 BP APPROVAL NO.: A1716-00010-2021-BP01 DATED 24/03/2023



Type C4

3 BEDROOM PREMIER

Type C4-G

99 m² / 1066 ft²

Inclusive of 5 m² PES & 6 m² AC Ledge

BLOCK 1 #01-02
BLOCK 3 #01-11
BLOCK 6 #01-32

Type C4

99 m² / 1066 ft²

Inclusive of 5 m² Balcony & 6 m² AC Ledge

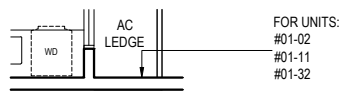
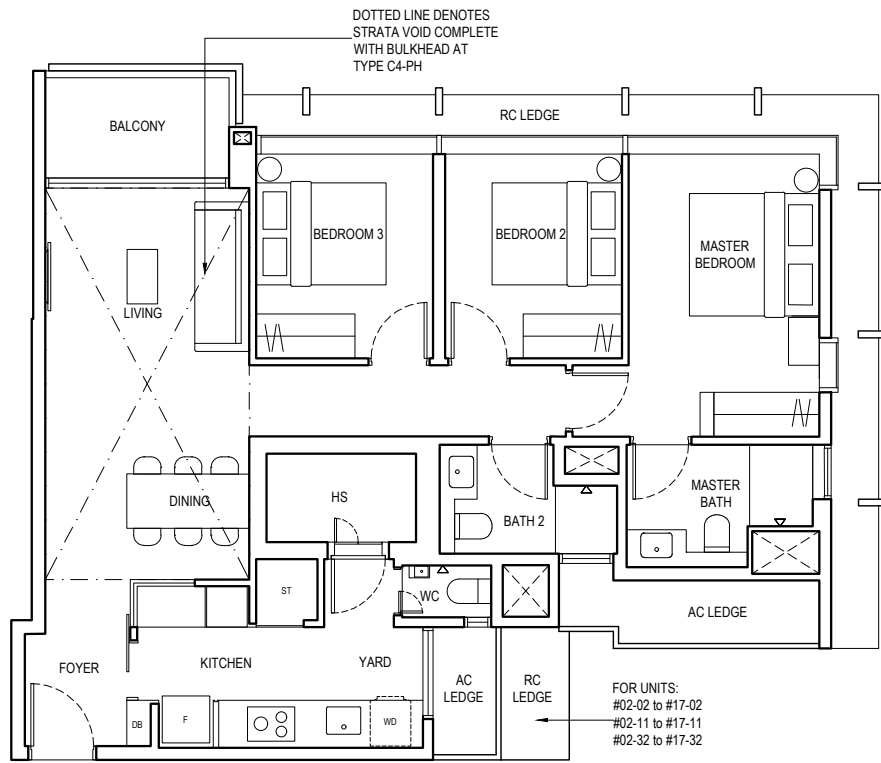
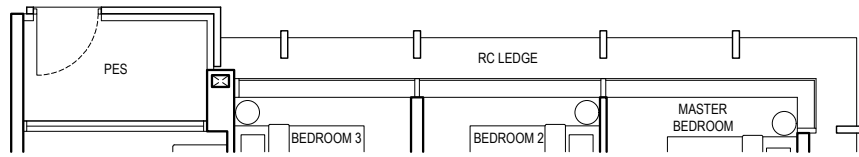
BLOCK 1 #02-02 to #16-02
BLOCK 3 #02-11 to #16-11
BLOCK 6 #02-32 to #16-32

Type C4-PH

119 m² / 1281 ft²

Inclusive of 20 m² Strata Void, 5 m² Balcony & 6 m² AC Ledge

BLOCK 1 #17-02
BLOCK 3 #17-11
BLOCK 6 #17-32



LEGEND

- | | | | |
|-----|------------------------|----|---|
| PES | PRIVATE ENCLOSED SPACE | ST | STORE I |
| DB | DISTRIBUTION BOARD | HS | HOUSEHOLD SHELTER |
| F | FRIDGE | WC | WATER CLOSET |
| WD | WASHER DRYER COMBO | RC | REINFORCED CONCRETE (EXCLUDED FROM STRATA AREA) |
| AC | AIR-CONDITIONER | □ | VOID SPACE (EXCLUDED FROM STRATA AREA) |



ALL PLANS ARE SUBJECT TO CHANGES BY THE RELEVANT AUTHORITIES.
 MEASUREMENTS ARE APPROXIMATE ONLY AND SUBJECT TO FINAL SURVEY.
 INFORMATION ACCURATE AT POINT OF PRINTING.
 BP APPROVAL NO.: A1716-00010-2021-BP01 DATED 24/03/2023



Type C5

3 BEDROOM PREMIER

Type C5-G

101 m² / 1087 ft²

Inclusive of 5 m² PES & 6 m² AC Ledge

BLOCK 3 #01-16
BLOCK 6 #01-37
BLOCK 8 #01-42*

Type C5

101 m² / 1087 ft²

Inclusive of 5 m² Balcony & 6 m² AC ledge

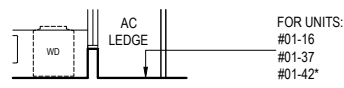
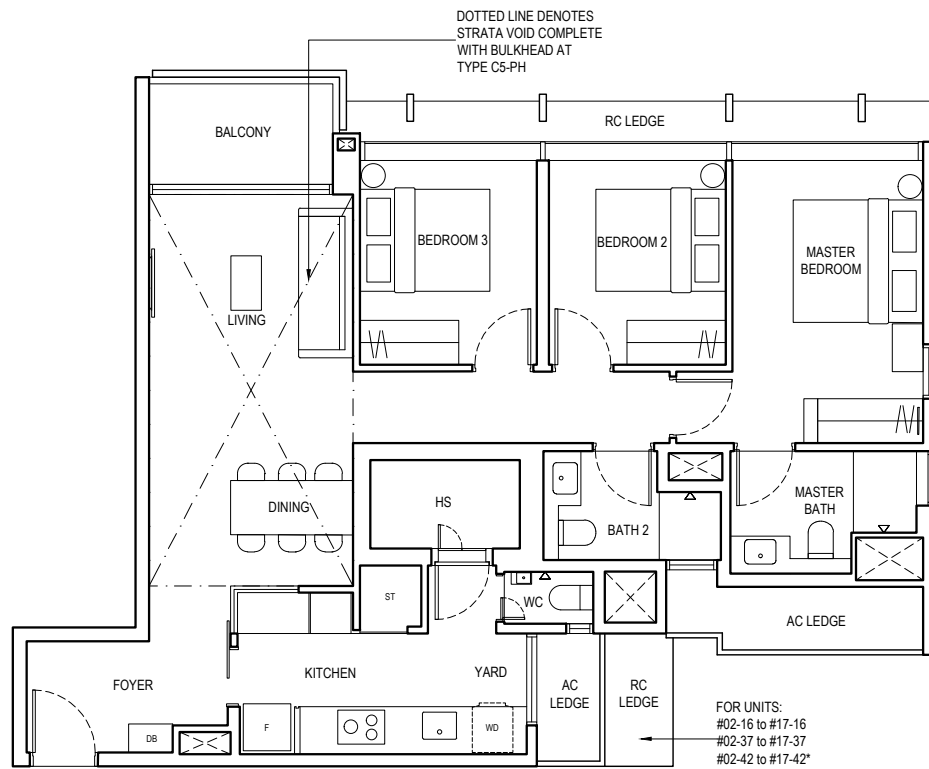
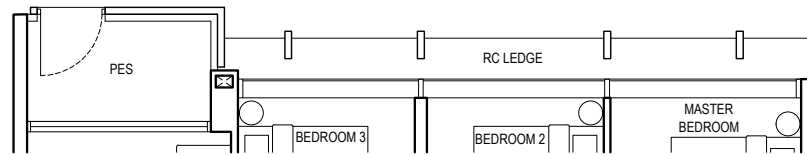
BLOCK 3 #02-16 to #16-16
BLOCK 6 #02-37 to #16-37
BLOCK 8 #02-42* to #16-42*

Type C5-PH

121 m² / 1302 ft²

Inclusive of 20 m² Strata Void, 5 m² Balcony & 6 m² AC Ledge

BLOCK 3 #17-16
BLOCK 6 #17-37
BLOCK 8 #17-42*



LEGEND

PES	PRIVATE ENCLOSED SPACE	HS	HOUSEHOLD SHELTER
DB	DISTRIBUTION BOARD	WC	WATER CLOSET
F	FRIDGE	RC	REINFORCED CONCRETE (EXCLUDED FROM STRATA AREA)
WD	WASHER DRYER COMBO		VOID SPACE (EXCLUDED FROM STRATA AREA)
AC	AIR-CONDITIONER	*	MIRRORED UNIT
ST	STORE		



ALL PLANS ARE SUBJECT TO CHANGES BY THE RELEVANT AUTHORITIES.
 MEASUREMENTS ARE APPROXIMATE ONLY AND SUBJECT TO FINAL SURVEY.
 INFORMATION ACCURATE AT POINT OF PRINTING.
 BP APPROVAL NO.: A1716-00010-2021-BP01 DATED 24/03/2023



Type C6

3 BEDROOM PREMIER

Type C6-G

101 m² / 1087 ft²

Inclusive of 5 m² PES & 6 m² AC Ledge

BLOCK 8 #01-46

Type C6

101 m² / 1087 ft²

Inclusive of 5 m² Balcony & 6 m² AC Ledge

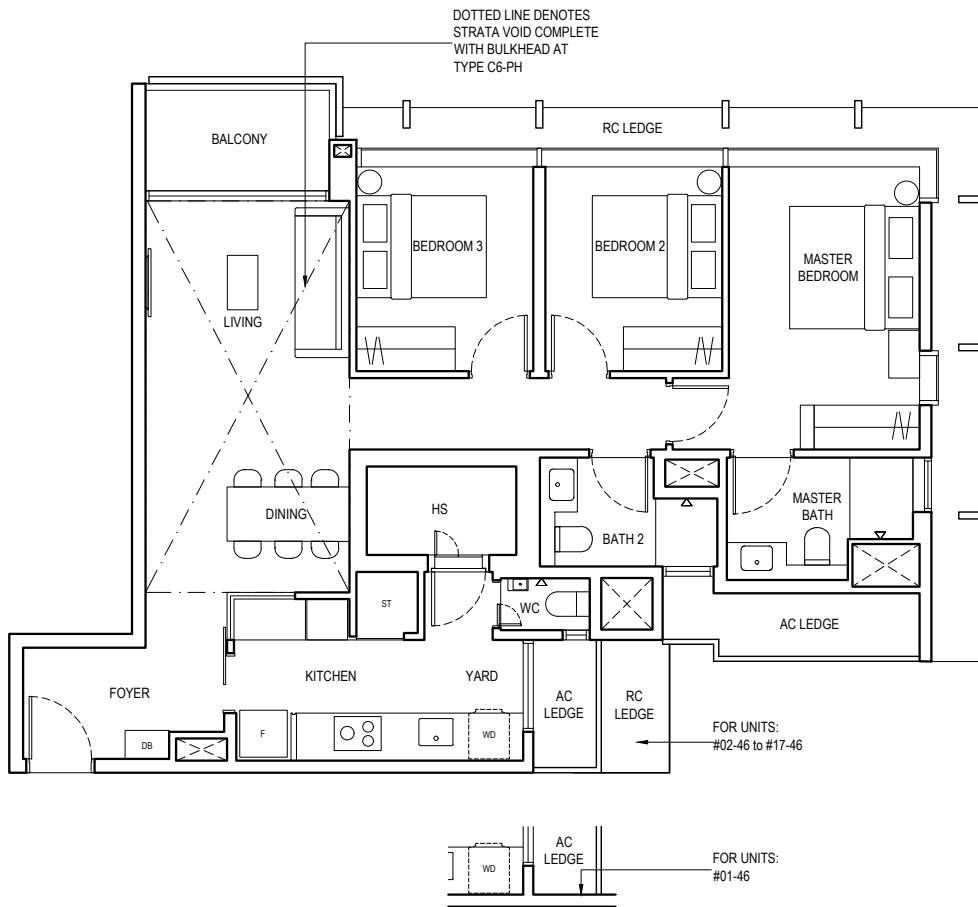
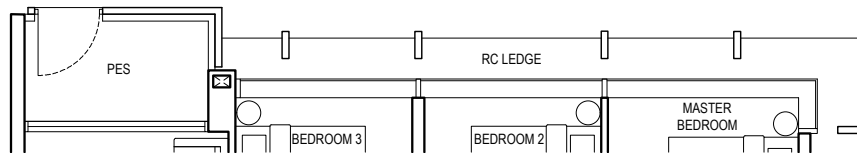
BLOCK 8 #02-46 to #16-46

Type C6-PH

121 m² / 1302 ft²

Inclusive of 20 m² Strata Void, 5 m² Balcony & 6 m² AC Ledge

BLOCK 8 #17-46



LEGEND

PES	PRIVATE ENCLOSED SPACE	HS	HOUSEHOLD SHELTER
DB	DISTRIBUTION BOARD	WC	WATER CLOSET
F	FRIDGE	RC	REINFORCED CONCRETE (EXCLUDED FROM STRATA AREA)
WD	WASHER DRYER COMBO	☐	VOID SPACE (EXCLUDED FROM STRATA AREA)
AC	AIR-CONDITIONER	*	MIRRORED UNIT
ST	STORE		



ALL PLANS ARE SUBJECT TO CHANGES BY THE RELEVANT AUTHORITIES. MEASUREMENTS ARE APPROXIMATE ONLY AND SUBJECT TO FINAL SURVEY. INFORMATION ACCURATE AT POINT OF PRINTING. BP APPROVAL NO.: A1716-00010-2021-BP01 DATED 24/03/2023



Type C7

3 BEDROOM PREMIER

Type C7-G

101 m² / 1087 ft²

Inclusive of 5 m² PES & 6 m² AC Ledge

BLOCK I #01-07

Type C7

101 m² / 1087 ft²

Inclusive of 5 m² Balcony & 6 m² AC ledge

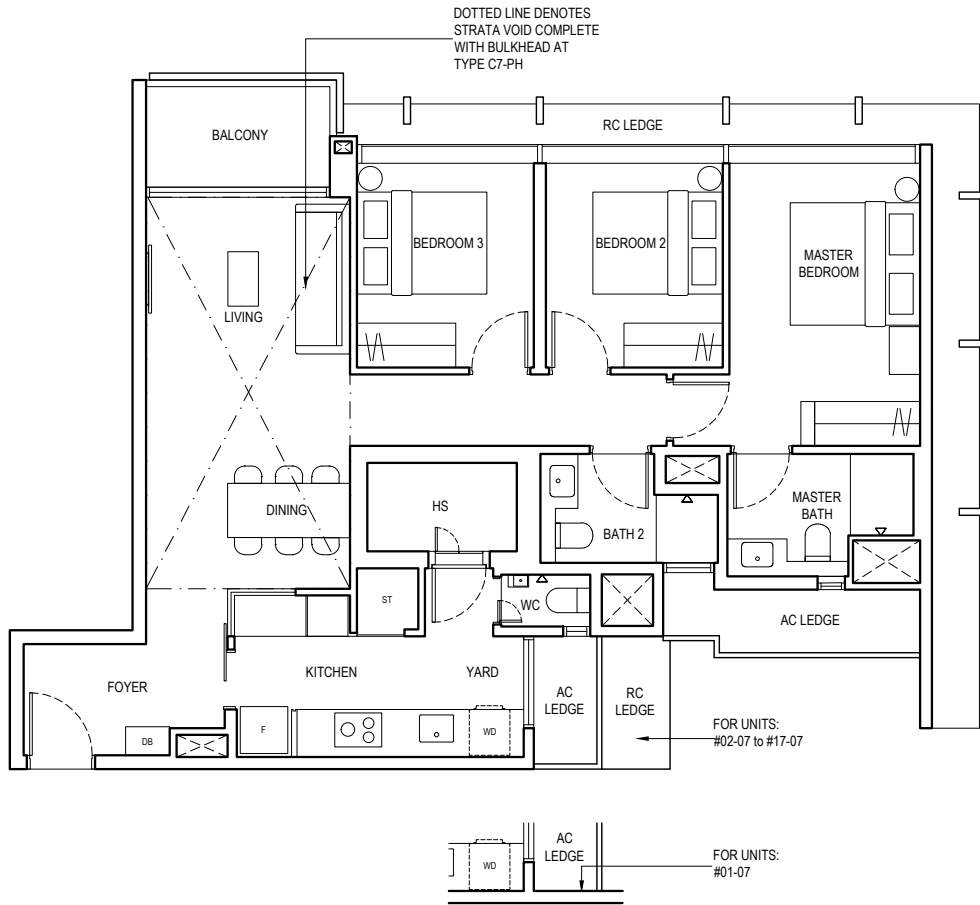
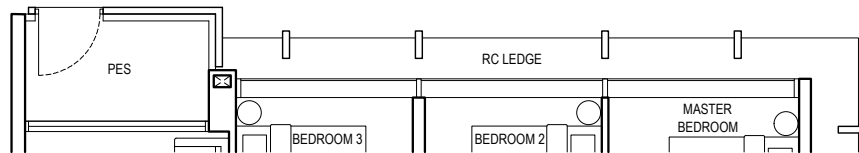
BLOCK I #02-07 to #16-07

Type C7-PH

121 m² / 1302 ft²

Inclusive of 20 m² Strata Void, 5 m² Balcony & 6 m² AC Ledge

BLOCK I #17-07

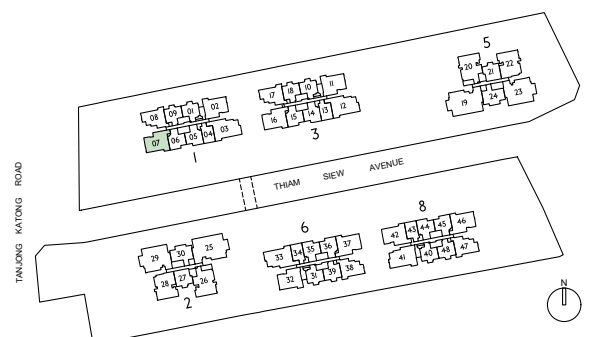


LEGEND

PES	PRIVATE ENCLOSED SPACE	HS	HOUSEHOLD SHELTER
DB	DISTRIBUTION BOARD	WC	WATER CLOSET
F	FRIDGE	RC	REINFORCED CONCRETE (EXCLUDED FROM STRATA AREA)
WD	WASHER DRYER COMBO		VOID SPACE (EXCLUDED FROM STRATA AREA)
AC	AIR-CONDITIONER	*	MIRRORED UNIT
ST	STORE I		



ALL PLANS ARE SUBJECT TO CHANGES BY THE RELEVANT AUTHORITIES. MEASUREMENTS ARE APPROXIMATE ONLY AND SUBJECT TO FINAL SURVEY. INFORMATION ACCURATE AT POINT OF PRINTING. BP APPROVAL NO.: A1716-00010-2021-BP01 DATED 24/03/2023



Type C8

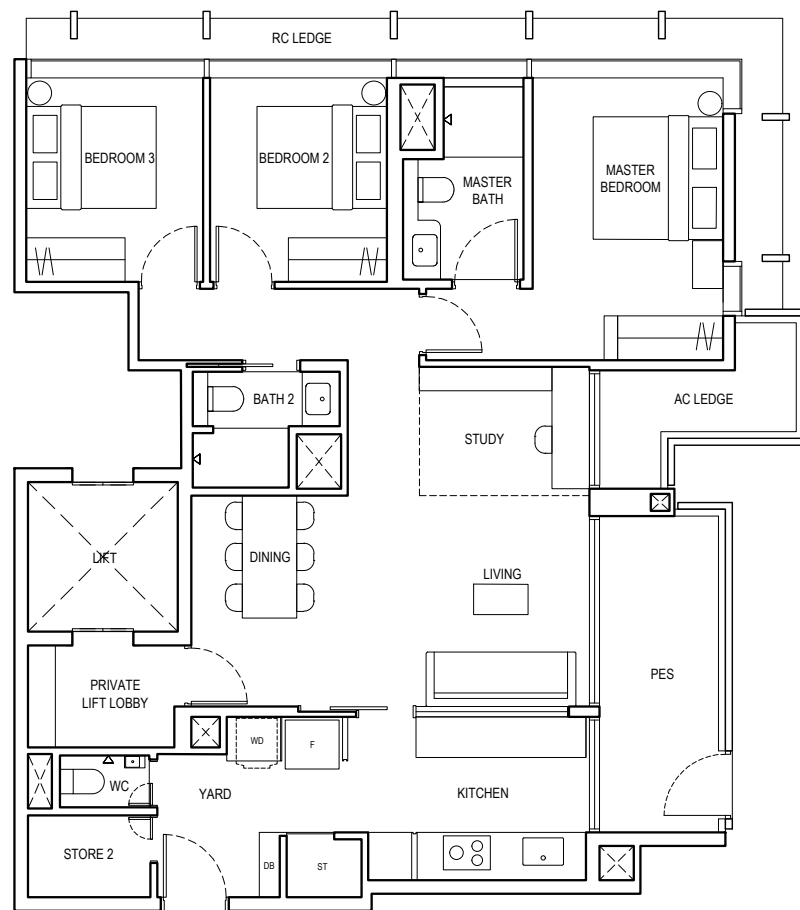
3 BEDROOM + STUDY

Type C8-G

114 m² / 1227 ft²

Inclusive of 10 m² PES &
5 m² AC Ledge

BLOCK 2 #01-28
BLOCK 5 #01-22



LEGEND

PES	PRIVATE ENCLOSED SPACE	ST	STORE 1
DB	DISTRIBUTION BOARD	WC	WATER CLOSET
F	FRIDGE	RC	REINFORCED CONCRETE (EXCLUDED FROM STRATA AREA)
WD	WASHER DRYER COMBO	☐	VOID SPACE (EXCLUDED FROM STRATA AREA)
AC	AIR-CONDITIONER		



ALL PLANS ARE SUBJECT TO CHANGES BY THE RELEVANT AUTHORITIES.
MEASUREMENTS ARE APPROXIMATE ONLY AND SUBJECT TO FINAL SURVEY.
INFORMATION ACCURATE AT POINT OF PRINTING.
BP APPROVAL NO.: A1716-00010-2021-BP01 DATED 24/03/2023



Type C8

3 BEDROOM + STUDY

Type C8

115 m² / 1238 ft²

Inclusive of 10 m² Balcony & 6 m² AC Ledge

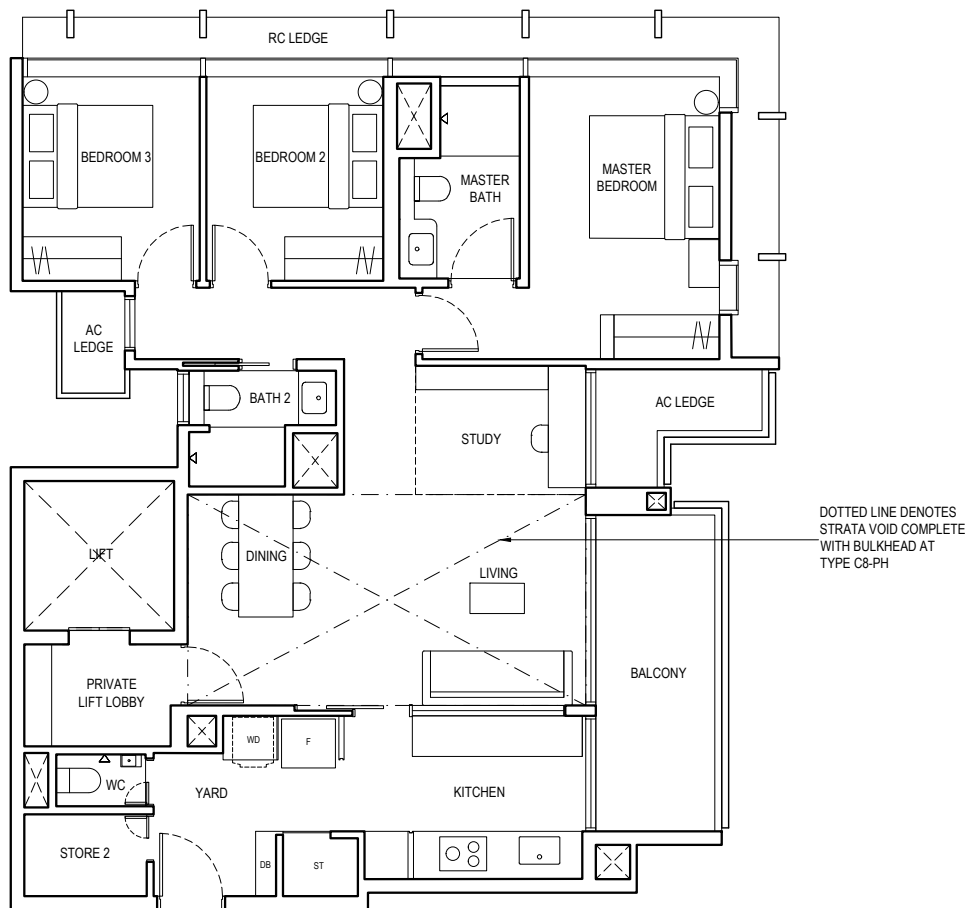
BLOCK 2 #02-28 to #17-28
BLOCK 5 #02-22 to #17-22

Type C8-PH

135 m² / 1453 ft²

Inclusive of 20 m² Strata Void, 10 m² Balcony & 6 m² AC ledge

BLOCK 2 #18-28
BLOCK 5 #18-22

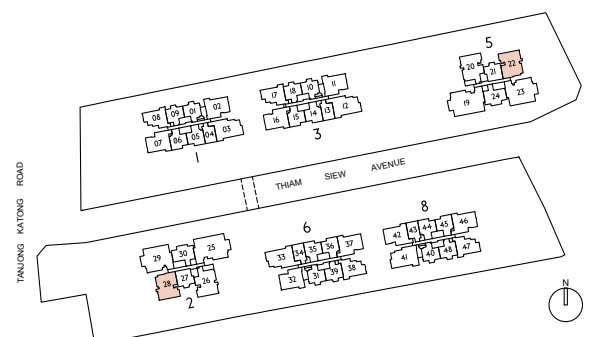


LEGEND

PES	PRIVATE ENCLOSED SPACE	ST	STORE 1
DB	DISTRIBUTION BOARD	WC	WATER CLOSET
F	FRIDGE	RC	REINFORCED CONCRETE (EXCLUDED FROM STRATA AREA)
WD	WASHER DRYER COMBO	□	VOID SPACE (EXCLUDED FROM STRATA AREA)
AC	AIR-CONDITIONER		



ALL PLANS ARE SUBJECT TO CHANGES BY THE RELEVANT AUTHORITIES.
MEASUREMENTS ARE APPROXIMATE ONLY AND SUBJECT TO FINAL SURVEY.
INFORMATION ACCURATE AT POINT OF PRINTING.
BP APPROVAL NO.: A1716-00010-2021-BP01 DATED 24/03/2023



Type C9

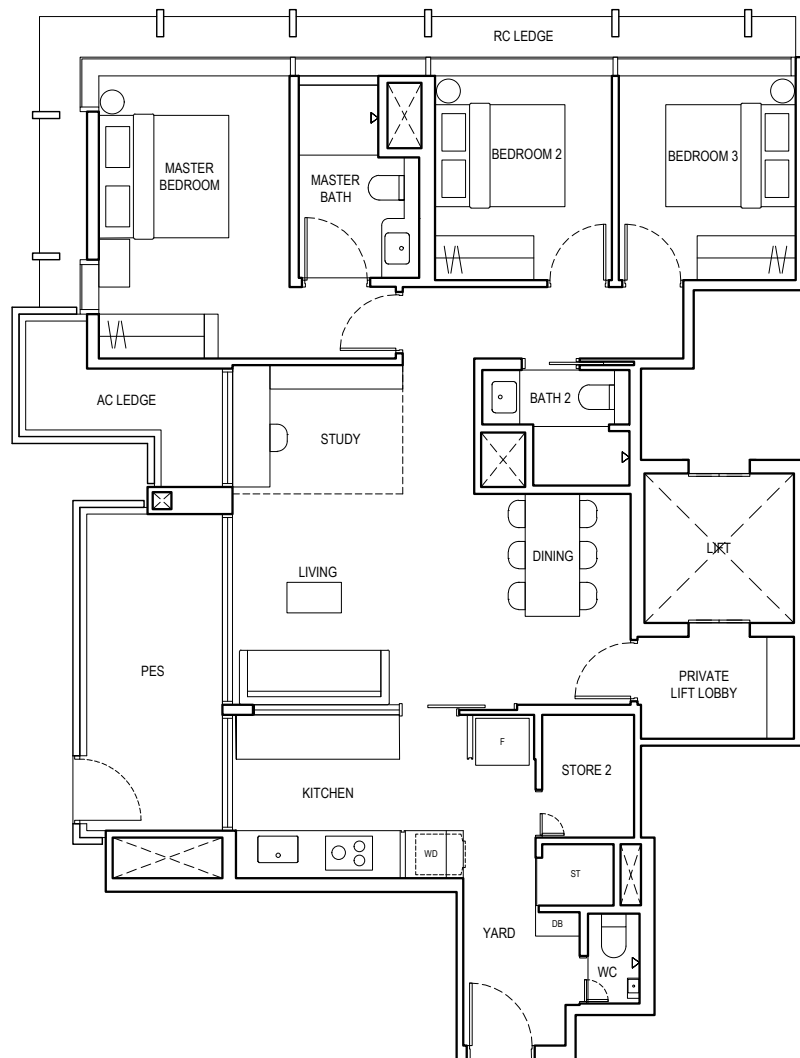
3 BEDROOM + STUDY

Type C9-G

116 m² / 1249 ft²

Inclusive of 11 m² PES &
6 m² AC Ledge

BLOCK 2 #01-26
BLOCK 5 #01-20

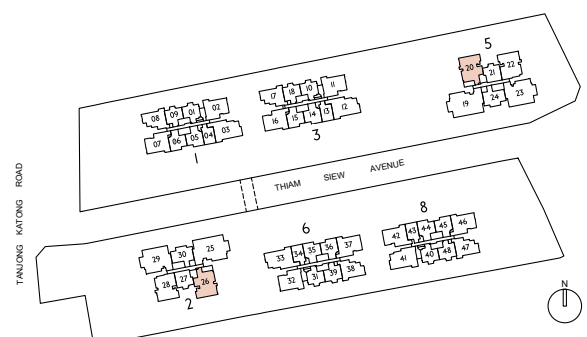


LEGEND

PES	PRIVATE ENCLOSED SPACE	ST	STORE 1
DB	DISTRIBUTION BOARD	WC	WATER CLOSET
F	FRIDGE	RC	REINFORCED CONCRETE (EXCLUDED FROM STRATA AREA)
WD	WASHER DRYER COMBO		VOID SPACE (EXCLUDED FROM STRATA AREA)
AC	AIR-CONDITIONER		



ALL PLANS ARE SUBJECT TO CHANGES BY THE RELEVANT AUTHORITIES.
MEASUREMENTS ARE APPROXIMATE ONLY AND SUBJECT TO FINAL SURVEY.
INFORMATION ACCURATE AT POINT OF PRINTING.
BP APPROVAL NO.: A1716-00010-2021-BP01 DATED 24/03/2023



Type C9

3 BEDROOM + STUDY

Type C9

116 m² / 1249 ft²

Inclusive of 11 m² Balcony & 6 m² AC Ledge

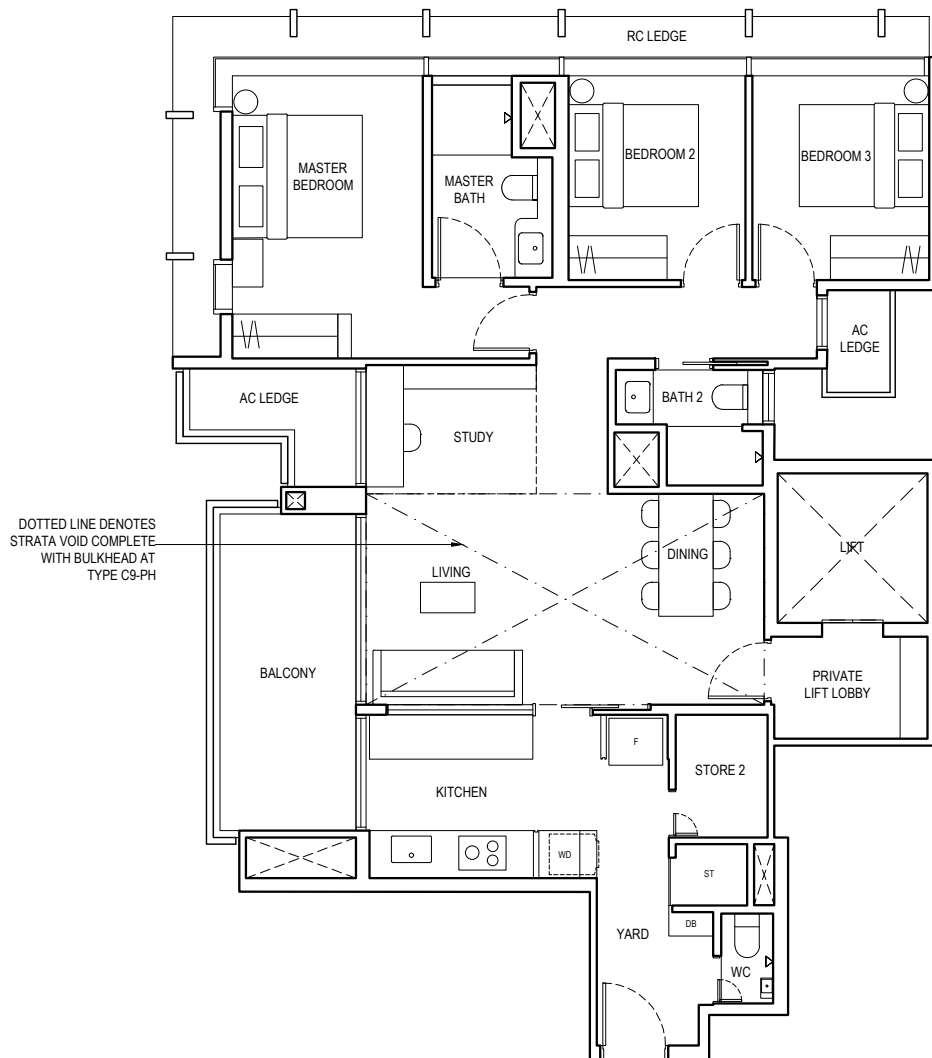
BLOCK 2 #02-26 to #17-26
BLOCK 5 #02-20 to #17-20

Type C9-PH

136 m² / 1464 ft²

Inclusive of 20 m² Strata Void, 11 m² Balcony & 6 m² AC Ledge

BLOCK 2 #18-26
BLOCK 5 #18-20

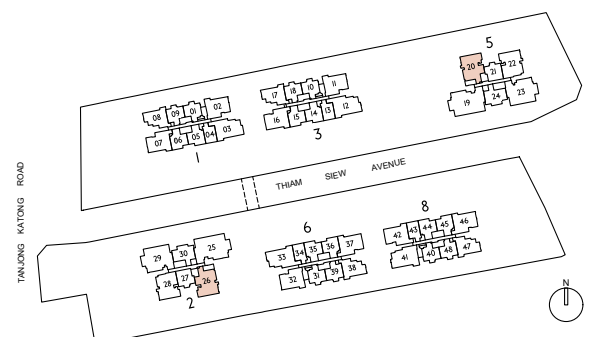


LEGEND

PES	PRIVATE ENCLOSED SPACE	ST	STORE 1
DB	DISTRIBUTION BOARD	WC	WATER CLOSET
F	FRIDGE	RC	REINFORCED CONCRETE (EXCLUDED FROM STRATA AREA)
WD	WASHER DRYER COMBO		VOID SPACE (EXCLUDED FROM STRATA AREA)
AC	AIR-CONDITIONER		



ALL PLANS ARE SUBJECT TO CHANGES BY THE RELEVANT AUTHORITIES.
MEASUREMENTS ARE APPROXIMATE ONLY AND SUBJECT TO FINAL SURVEY.
INFORMATION ACCURATE AT POINT OF PRINTING.
BP APPROVAL NO.: A1716-00010-2021-BP01 DATED 24/03/2023



Type D1

4 BEDROOM

Type D1-G

114 m² / 1227 ft²

Inclusive of 5 m² PES & 7 m² AC Ledge

BLOCK 8 #01-41

Type D1

114 m² / 1227 ft²

Inclusive of 5 m² Balcony & 7 m² AC Ledge

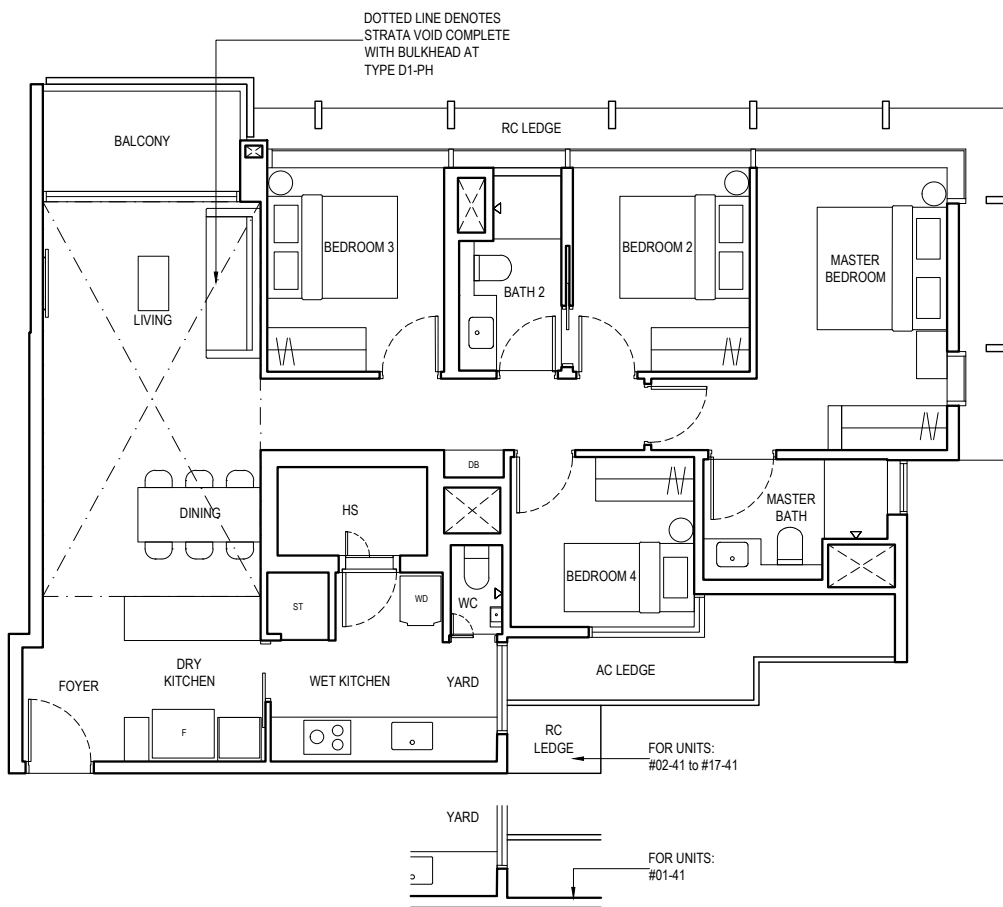
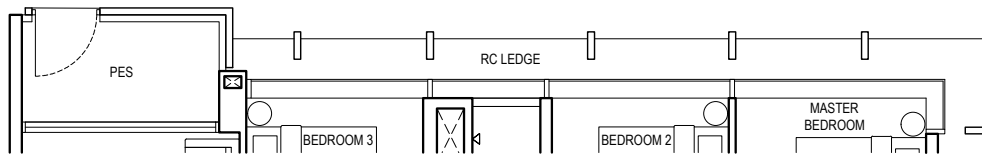
BLOCK 8 #02-41 to #16-41

Type D1-PH

135 m² / 1453 ft²

Inclusive of 21 m² Strata Void, 5 m² Balcony & 7 m² AC Ledge

BLOCK 8 #17-41

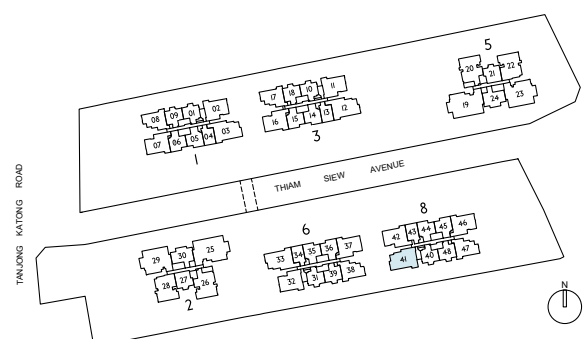


LEGEND

PES	PRIVATE ENCLOSED SPACE	ST	STORE I
DB	DISTRIBUTION BOARD	HS	HOUSEHOLD SHELTER
F	FRIDGE	WC	WATER CLOSET
WD	WASHER DRYER COMBO	RC	REINFORCED CONCRETE (EXCLUDED FROM STRATA AREA)
AC	AIR-CONDITIONER		VOID SPACE (EXCLUDED FROM STRATA AREA)

0 1 2 3 4 5M

ALL PLANS ARE SUBJECT TO CHANGES BY THE RELEVANT AUTHORITIES.
MEASUREMENTS ARE APPROXIMATE ONLY AND SUBJECT TO FINAL SURVEY.
INFORMATION ACCURATE AT POINT OF PRINTING.
BP APPROVAL NO.: A1716-00010-2021-BP01 DATED 24/03/2023



Type D2

4 BEDROOM

Type D2-G

118 m² / 1270 ft²

Inclusive of 5 m² PES & 7 m² AC Ledge

BLOCK 3 #01-12
BLOCK 6 #01-33

Type D2

118 m² / 1270 ft²

Inclusive of 5 m² Balcony & 7 m² AC Ledge

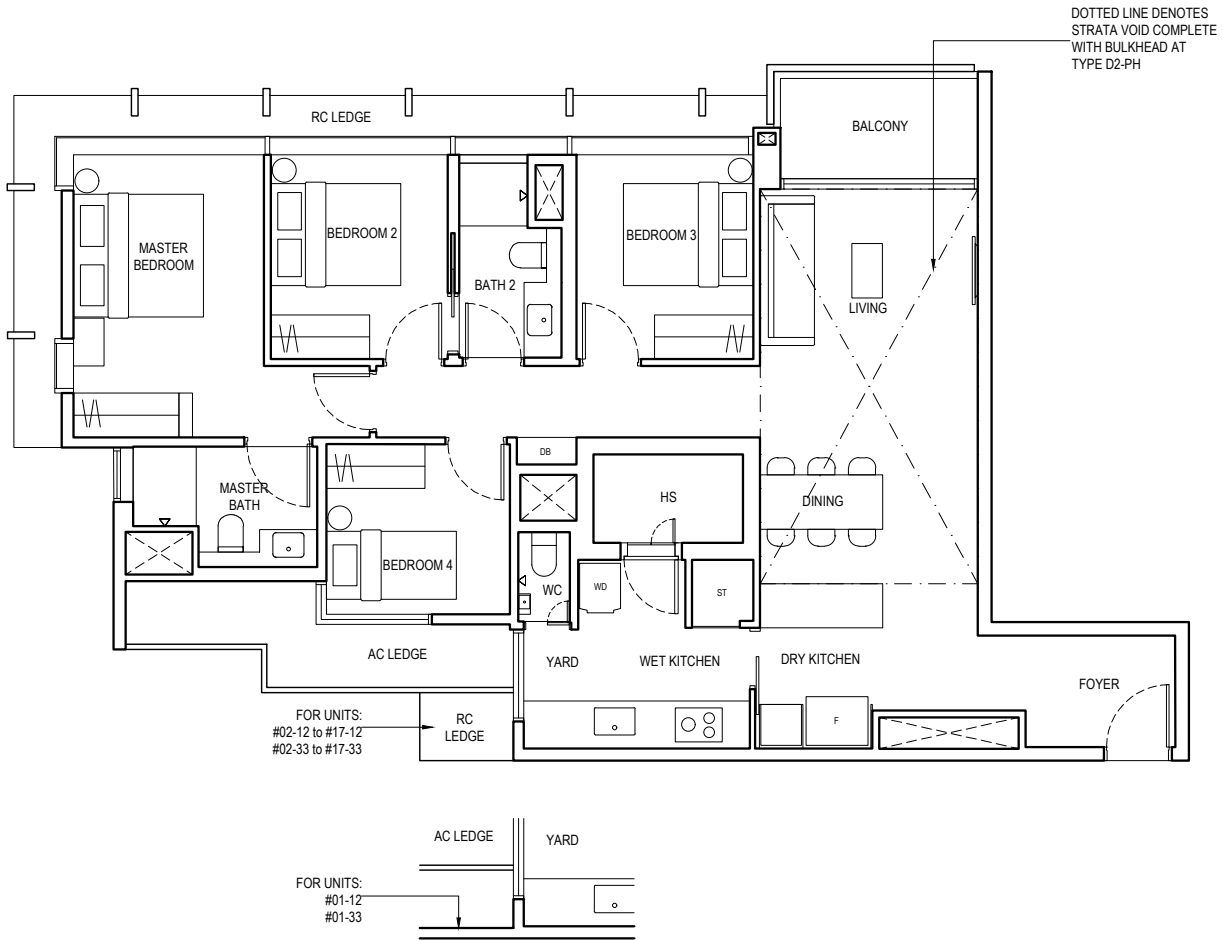
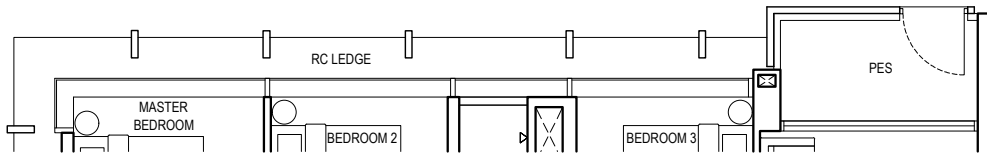
BLOCK 3 #02-12 to #16-12
BLOCK 6 #02-33 to #16-33

Type D2-PH

139 m² / 1496 ft²

Inclusive of 21 m² Strata Void, 5 m² Balcony & 7 m² AC Ledge

BLOCK 3 #17-12
BLOCK 6 #17-33

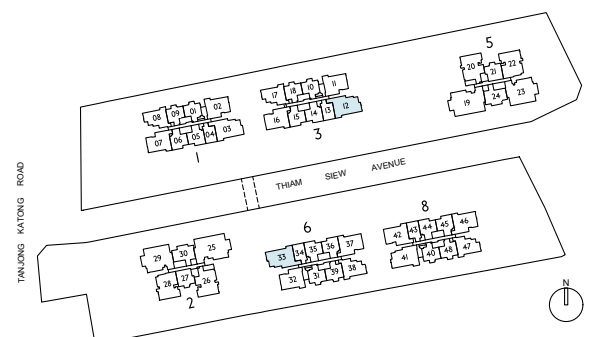


LEGEND

PES	PRIVATE ENCLOSED SPACE	ST	STORE I
DB	DISTRIBUTION BOARD	HS	HOUSEHOLD SHELTER
F	FRIDGE	WC	WATER CLOSET
WD	WASHER DRYER COMBO	RC	REINFORCED CONCRETE (EXCLUDED FROM STRATA AREA)
AC	AIR-CONDITIONER	☐	VOID SPACE (EXCLUDED FROM STRATA AREA)



ALL PLANS ARE SUBJECT TO CHANGES BY THE RELEVANT AUTHORITIES. MEASUREMENTS ARE APPROXIMATE ONLY AND SUBJECT TO FINAL SURVEY. INFORMATION ACCURATE AT POINT OF PRINTING. BP APPROVAL NO.: A1716-00010-2021-BP01 DATED 24/03/2023



Type D3

4 BEDROOM

Type D3-G

120 m² / 1292 ft²

Inclusive of 5 m² PES & 8 m² AC Ledge

BLOCK I #01-03

Type D3

120 m² / 1292 ft²

Inclusive of 5 m² Balcony & 8 m² AC Ledge

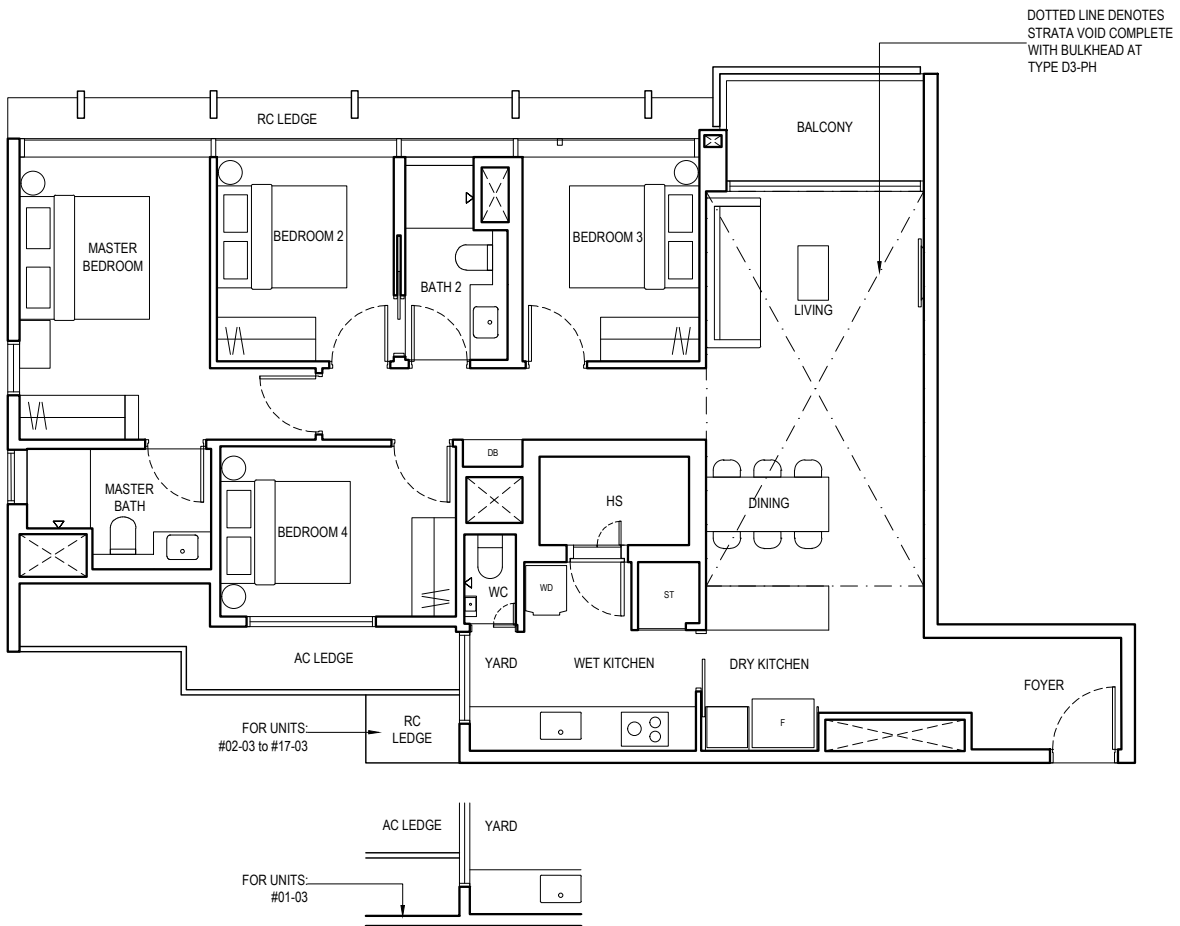
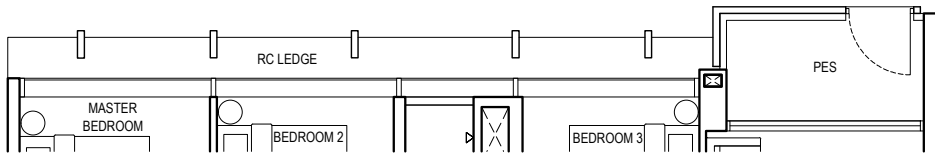
BLOCK I #02-03 to #16-03

Type D3-PH

141 m² / 1518 ft²

Inclusive of 21 m² Strata Void, 5 m² Balcony & 8 m² AC Ledge

BLOCK I #17-03

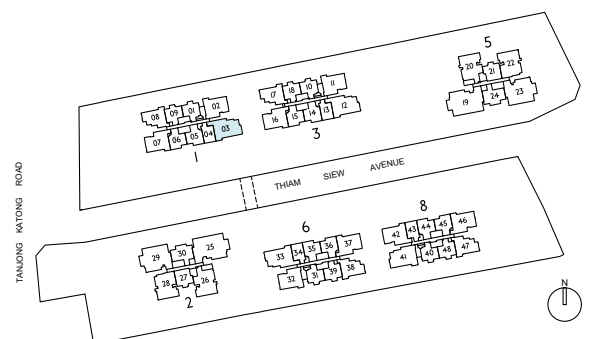


LEGEND

PES	PRIVATE ENCLOSED SPACE	ST	STORE I
DB	DISTRIBUTION BOARD	HS	HOUSEHOLD SHELTER
F	FRIDGE	WC	WATER CLOSET
WD	WASHER DRYER COMBO	RC	REINFORCED CONCRETE (EXCLUDED FROM STRATA AREA)
AC	AIR-CONDITIONER	☐	VOID SPACE (EXCLUDED FROM STRATA AREA)



ALL PLANS ARE SUBJECT TO CHANGES BY THE RELEVANT AUTHORITIES.
MEASUREMENTS ARE APPROXIMATE ONLY AND SUBJECT TO FINAL SURVEY.
INFORMATION ACCURATE AT POINT OF PRINTING.
BP APPROVAL NO.: A1716-00010-2021-BP01 DATED 24/03/2023



Type D4

4 BEDROOM PREMIER

Type D4

157 m² / 1690 ft²

Inclusive of 11 m² Balcony & 7 m² AC Ledge

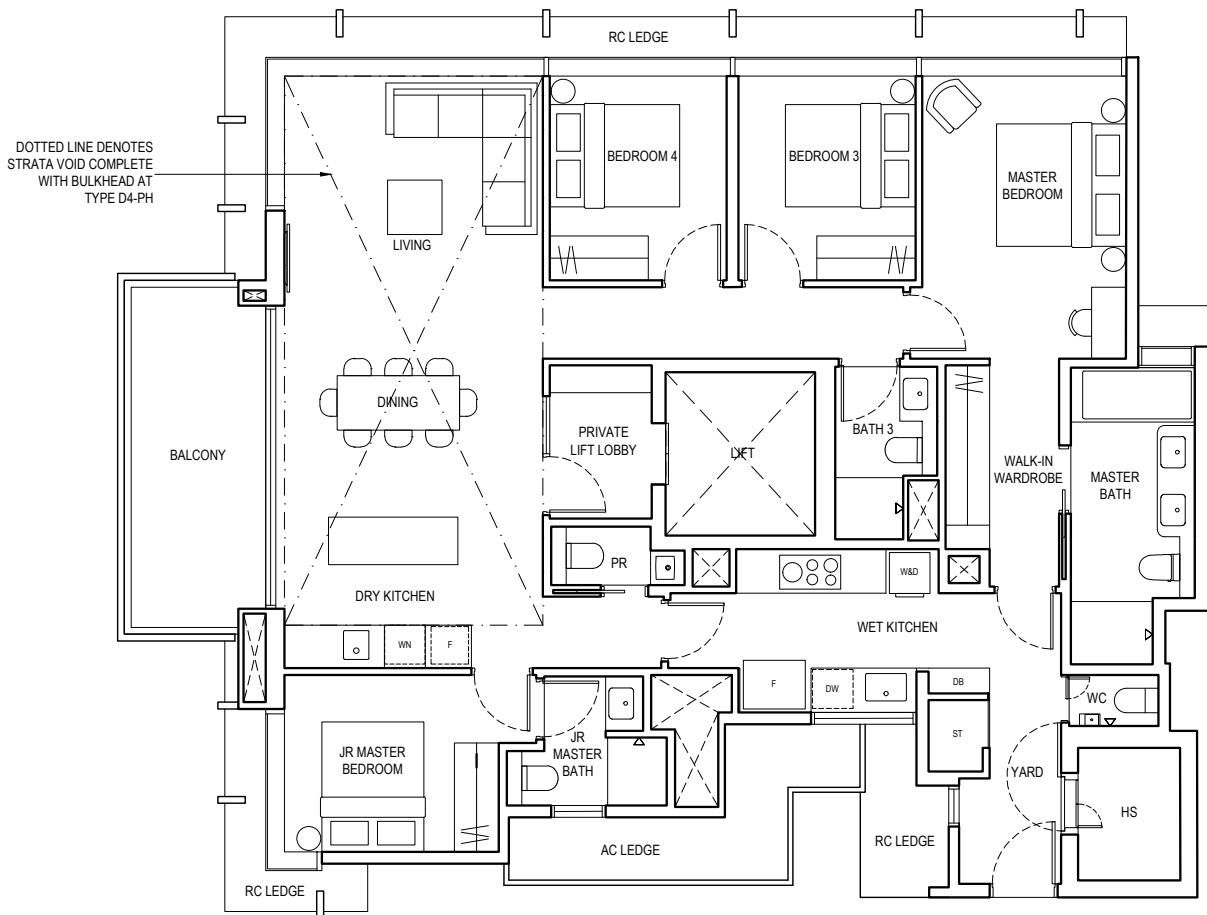
BLOCK 2 #03-29 to #17-29
BLOCK 5 #03-23 to #17-23

Type D4-PH

189 m² / 2034 ft²

Inclusive of 32 m² Strata Void, 11 m² Balcony & 7 m² AC Ledge

BLOCK 2 #18-29
BLOCK 5 #18-23

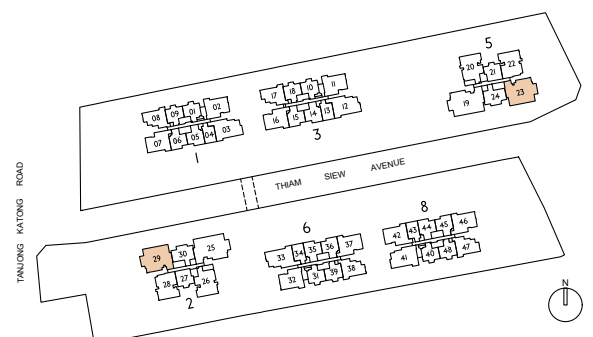


LEGEND

DB	DISTRIBUTION BOARD	PR	POWDER ROOM
F	FRIDGE	DW	DISHWASHER
W	WASHER	WN	WINE CHILLER
D	DRYER	WC	WATER CLOSET
HS	HOUSEHOLD SHELTER	RC	REINFORCED CONCRETE (EXCLUDED FROM STRATA AREA)
AC	AIR-CONDITIONER	□	VOID SPACE (EXCLUDED FROM STRATA AREA)
ST	STORE I		



ALL PLANS ARE SUBJECT TO CHANGES BY THE RELEVANT AUTHORITIES.
 MEASUREMENTS ARE APPROXIMATE ONLY AND SUBJECT TO FINAL SURVEY.
 INFORMATION ACCURATE AT POINT OF PRINTING.
 BP APPROVAL NO.: A1716-00010-2021-BP01 DATED 24/03/2023



Type E

5 BEDROOM

Type E

177 m² / 1905 ft²

Inclusive of 11 m² Balcony & 9 m² AC Ledge

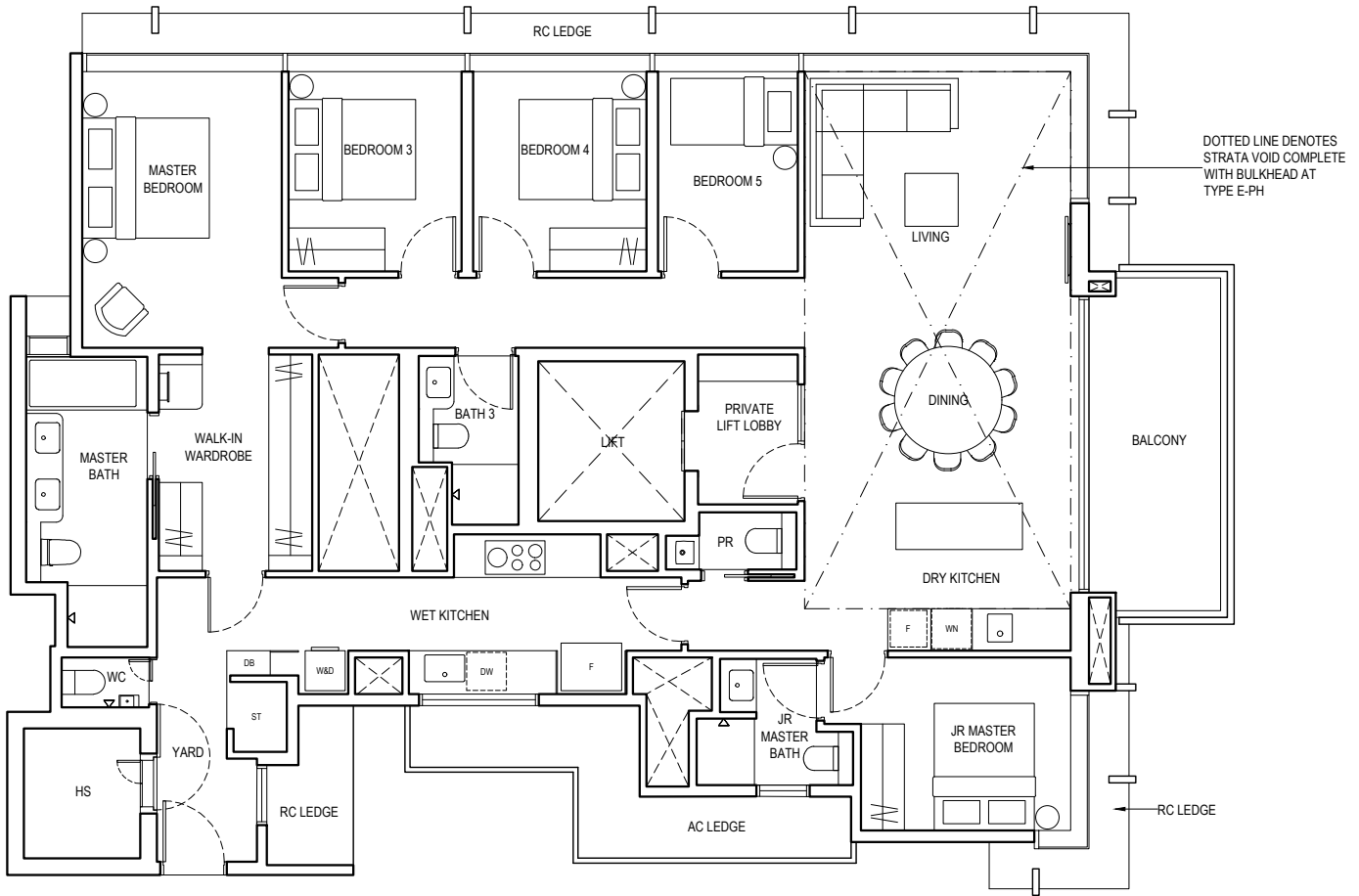
BLOCK 2 #03-25 to #17-25
BLOCK 5 #03-19 to #17-19

Type E-PH

210 m² / 2260 ft²

Inclusive of 33 m² Strata Void, 11 m² Balcony & 9 m² AC Ledge

BLOCK 2 #18-25
BLOCK 5 #18-19

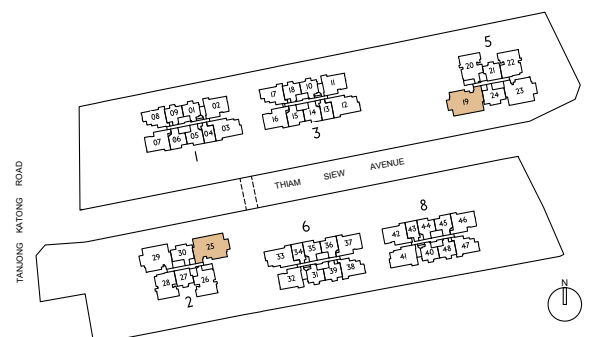


LEGEND

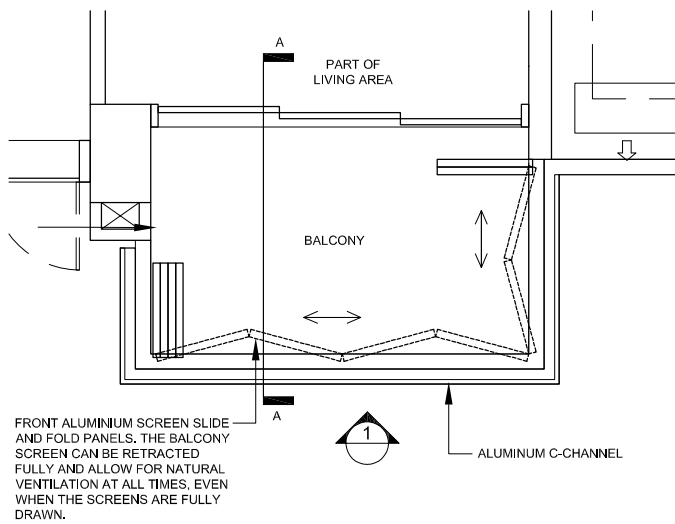
DB	DISTRIBUTION BOARD	PR	POWDER ROOM
F	FRIDGE	DW	DISHWASHER
W	WASHER	WN	WINE CHILLER
D	DRYER	WC	WATER CLOSET
HS	HOUSEHOLD SHELTER	RC	REINFORCED CONCRETE (EXCLUDED FROM STRATA AREA)
AC	AIR-CONDITIONER		VOID SPACE (EXCLUDED FROM STRATA AREA)
ST	STORE		



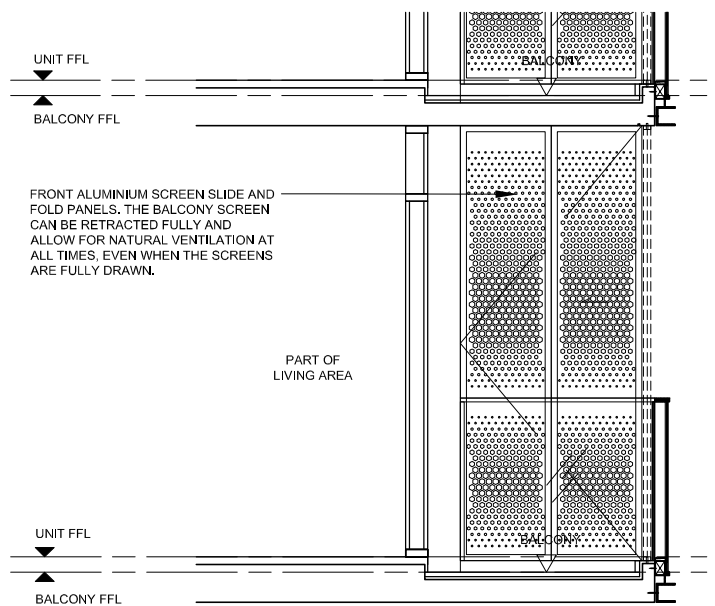
ALL PLANS ARE SUBJECT TO CHANGES BY THE RELEVANT AUTHORITIES.
MEASUREMENTS ARE APPROXIMATE ONLY AND SUBJECT TO FINAL SURVEY.
INFORMATION ACCURATE AT POINT OF PRINTING.
BP APPROVAL NO.: A1716-00010-2021-BP01 DATED 24/03/2023



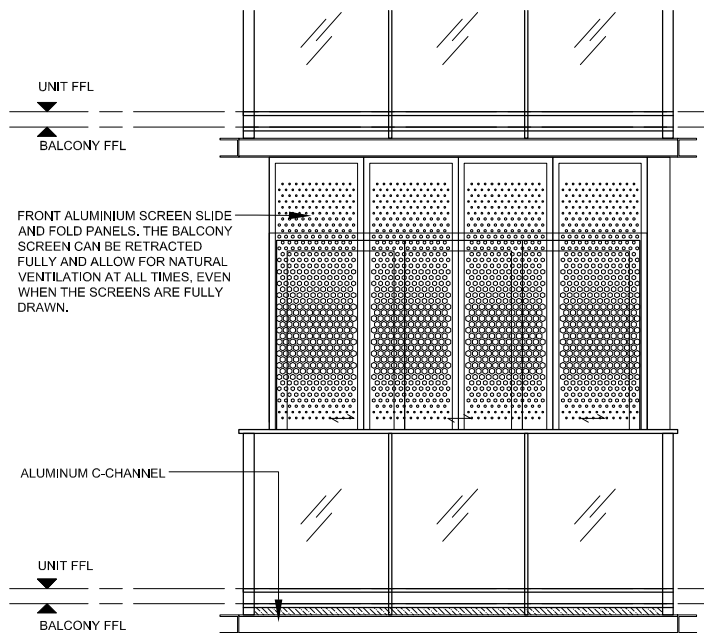
Approved Balcony Chart



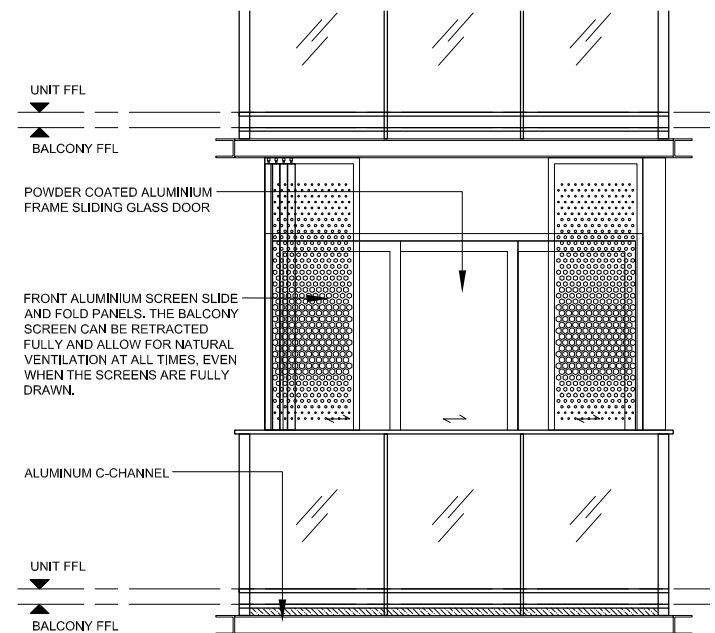
TYPICAL RETRACTABLE BALCONY SCREEN PLAN



TYPICAL RETRACTABLE BALCONY SCREEN SECTION



TYPICAL RETRACTABLE BALCONY SCREEN ELEVATION (*FULLY DRAWN)



TYPICAL RETRACTABLE BALCONY SCREEN ELEVATION (*FULLY RETRACTED)

NOTE

1. Aluminium louver sliding folding screen is not provided for this development (unless otherwise stated).
2. The balcony shall not be enclosed unless the screen is approved by the relevant authorities.
3. Final selection of material, colour and detailing of the screen is subject to MCST & relevant authorities approval.
4. Approval from MCST is required before installation.
5. Owner to engage the developer's appointed contractor and/or their own contractor to install the screen.
6. All installation fees to be borne by the owner.
7. Measurements are approximate only and subject to final survey.

